

# Total Access Statistics



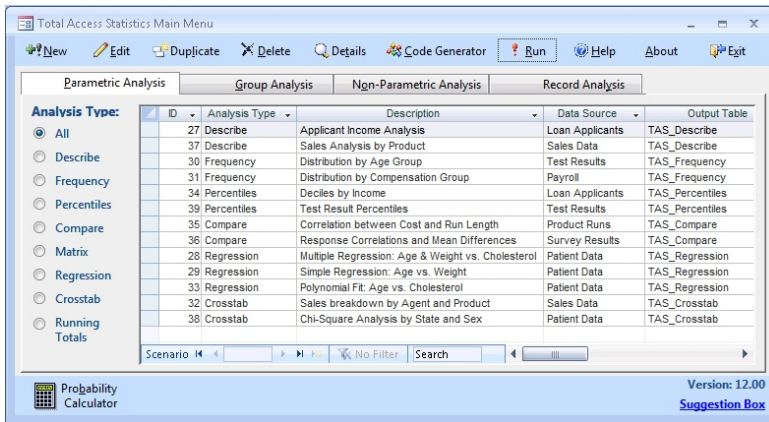
New Version for Access 2007

**FREE TRIAL**

## Number Crunching for Access

### The Most Powerful Numerical Analysis Program for Access is Even Better!

The 2007 and x.7 versions of Total Access Statistics are shipping with many new features including support for ADPs, queries with parameters, and new calculations.



Running as an add-in, the Statistics Wizard guides you through the analysis and saves the settings for reuse. Results are provided in tables that you can add directly to your queries, forms and reports!

### A Wide Range of Statistical Calculations are Available

#### Parametric Analysis

- Field Descriptives
- Percentiles
- Frequency Distributions
- Field Comparison
- Matrix Comparison
- Regressions (Simple, Multiple, Polynomial)
- Crosstabs and Chi-Square
- Running Totals

#### Record Analysis

- Random record selection
- Normalize spreadsheet-like data
- Rank records and handle ties

#### Group Analysis

- Two-sample t-Tests
- ANOVA (Analysis of Variance)
- Two-way ANOVA

### New for 2007!

- Supports the Access 2007 ACCDB database format
- New, sleek, modern Access 2007 user interface

### New x.7 Features!

- Runs as an add-in for ADPs in addition to MDBs
- Use parameterized "ad hoc" queries, stored procedures, and user defined functions as data sources
- Calculate Running Totals such as Moving Averages, Sums, Standard Deviation, Median, Mode, etc.
- Assign the estimated value from Regressions directly to your records
- Options to assign Percentile values to your records

#### Non-Parametric Analysis

- One Sample Chi-Square
- One Sample and Paired Sign Test
- K-S Goodness of Fit
- Wilcoxon Signed Rank Test
- Wald-Wolfowitz Runs Test
- K-S Two Sample Test
- K-W Analysis of Variance
- Friedman's Two Way ANOVA

**"This tool does a good job of making the most of your data. Couple that with a royalty-free runtime license, and you have a tool worth buying."**

**Craig Bobchin  
Access Advisor Review**

### General Features

- Use data from any table, linked table, query, view, SP, or UDF
- Analyze an unlimited number of records in one pass
- Analyze multiple fields at one time
- Specify Group Fields to analyze grouped records separately
- All output stored in tables
- Optionally specify a field to calculate Weighted records
- Optionally specify a value or range of values to ignore
- Provides a simple VBA programmatic interface
- Includes a runtime library and royalty-free license

**FMS • 1-866-367-7801 • fmsinc.com • sales@fmsinc.com**



**Versions**  
for Microsoft®  
Access 2007, 2003,  
2002, 2000 and 97

Single 5-Pack  
**\$599 \$1799**  
Upgrade Single \$399

