
Version Launcher for Microsoft® Access



For Microsoft® Access



fmsinc.com

License Agreement

PLEASE READ THE FMS SOFTWARE LICENSE AGREEMENT. YOU MUST AGREE TO BE BOUND BY THE TERMS OF THIS AGREEMENT BEFORE YOU CAN INSTALL OR USE THE SOFTWARE.

IF YOU DO NOT ACCEPT THE TERMS OF THE LICENSE AGREEMENT FOR THIS OR ANY FMS SOFTWARE PRODUCT, YOU MAY NOT INSTALL OR USE THE SOFTWARE. YOU SHOULD PROMPTLY RETURN ANY FMS SOFTWARE PRODUCT FOR WHICH YOU ARE UNWILLING OR UNABLE TO AGREE TO THE TERMS OF THE FMS SOFTWARE LICENSE AGREEMENT FOR A REFUND OF THE PURCHASE PRICE.

Ownership of the Software

The enclosed software program ("SOFTWARE") and the accompanying written materials are owned by FMS, Inc. or its suppliers and are protected by United States copyright laws, by laws of other nations, and by international treaties. You must treat the SOFTWARE like any other copyrighted material except that you may make one copy of the SOFTWARE solely for backup or archival purpose, and you may transfer the SOFTWARE to a permanent storage device.

Grant of License

Licensing is based on the number of copies of Total Access Startup installed. Each copy requires a separate license. One installation can be used to manage an unlimited number of databases called by an unlimited number of users on that network.

Use and Redistribution Rights

This SOFTWARE license is for one user only and includes a Runtime License granting limited redistribution rights. With the exception of the Redistributable Launcher (TASLnch.exe), no other files may be distributed.

The Redistributable Launcher (TASLnch.exe) ensures users who are not on your network launch the right version of Microsoft Office Access with your database. It does not support updates of new versions of your database since the user is disconnected from your network.

The Runtime License gives you the non-exclusive, royalty-free right to incorporate Total Access Startup in your applications, provided that:

1. Each developer using the SOFTWARE owns a Runtime License.
2. Your application adds substantial value to the SOFTWARE and is not a standalone launcher program.
3. Your application does not attempt to replicate the interactive user interface of the SOFTWARE.
4. Your application is not a freeware or shareware product.
5. You only distribute the Redistributable Launcher and no other files of the SOFTWARE.
6. If you claim a copyright, you must add a clause stating, "Portions of this program are copyright Total Access Startup from FMS, Inc.", and do not claim ownership of the Software.

7. You agree to indemnify, hold harmless, and defend FMS and its suppliers or contractors from and against any claims or lawsuits, including attorneys' fees that arise or result from the use or distribution or other activities relating to your applications.

Other Limitations

Under no circumstances may you attempt to reverse engineer this product. You may not rent or lease the SOFTWARE.

You may not transfer any of your rights under the FMS Software License Agreement to other individuals or entities. Without prejudice to any other rights, FMS may terminate this FMS Software License Agreement at any time if you fail to comply with any of its terms. In such an event of termination, you must destroy and stop using all affected SOFTWARE copies.

Transfer of License

If your SOFTWARE is marked "NOT FOR RESALE," you may not sell or resell the SOFTWARE, nor may you transfer the FMS Software license.

If your SOFTWARE is not marked "NOT FOR RESALE," you may transfer your license of the SOFTWARE to another user or entity provided that:

1. You have not distributed applications using the SOFTWARE.
2. You have not upgraded to a later version of the SOFTWARE.
3. The recipient agrees to all terms of the FMS Software License Agreement.
4. You provide all original materials including software disks or compact disks, and any other part of the SOFTWARE's physical distribution to the recipient.
5. You remove all installations of the SOFTWARE.
6. You notify FMS, in writing, of the ownership transfer.

Limited Warranty

If you discover physical defects in the media on which this SOFTWARE is distributed, or in the related manual, FMS, Inc. will replace the media or manual at no charge to you, provided you return the item(s) within 60 days after purchase.

ALL IMPLIED WARRANTIES ON THE MEDIA AND MANUAL, INCLUDING IMPLIED WARRANTIES OF MERCHANTABILITY AND FITNESS FOR A PARTICULAR PURPOSE ARE LIMITED TO SIXTY (60) DAYS FROM THE DATE OF PURCHASE OF THIS PRODUCT.

Although FMS, Inc. has tested this program and reviewed the documentation, FMS, Inc. makes no warranty or representation, either expressed or implied, with respect to this software, its quality, performance, merchantability, or fitness for a particular purpose. As a result, this software is licensed "AS-IS," and you are assuming the entire risk as to its quality and performance. IN NO EVENT WILL FMS, INC. BE LIABLE FOR DIRECT, INDIRECT, SPECIAL, INCIDENTAL, OR CONSEQUENTIAL DAMAGES RESULTING FROM THE USE, OR INABILITY TO USE THIS SOFTWARE OR ITS DOCUMENTATION.

THE WARRANTY AND REMEDIES SET FORTH IN THIS LIMITED WARRANTY ARE EXCLUSIVE AND IN LIEU OF ALL OTHERS, ORAL OR WRITTEN, EXPRESSED OR IMPLIED.

Some states do not allow the exclusion or limitation of implied warranties or liability for incidental or consequential damages, so the above limitations or exclusions may not apply to you. This warranty gives you specific legal rights; you may also have other rights that vary from state to state.

U.S. Government Restricted Rights

The SOFTWARE and documentation are provided with RESTRICTED RIGHTS. Use, duplication, or disclosure by the Government is subject to restrictions as set forth in subparagraph (c) (1) (ii) of the Rights in Technical Data and Computer Software clause at DFARS 252.227-7013 or subparagraphs (c) (1) and (2) of the Commercial Computer Software - Restricted Rights at 48 CFR 52.227-19, as applicable.

Manufacturer is FMS Inc., Vienna, Virginia.
Printed in the USA.

Total Access Startup is copyright © by FMS, Inc.

All rights reserved.

Microsoft, Microsoft Office Access, Microsoft Windows, and Visual Basic are registered trademarks of Microsoft Corporation.

All other trademarks are trademarks of their respective owners.

Acknowledgments

We would like to thank everyone who contributed to make Total Access Startup a reality. Thanks to the many existing users who provided valuable feedback and suggestions, and to all of our beta testers for their diligence and feedback.

Many people at FMS contributed to the creation of Total Access Startup, including:

- **Design & Development:** Luke Chung, Scott Ellis, and Molly Pell
- **Documentation:** Luke Chung, Scott Ellis, Molly Pell and Angela Owens
- **Quality Assurance/Support:** Katie Bredahl, John Litchfield, Molly Pell, and Madhuja Nair

Table of Contents

Chapter 1: Introduction	3
About Total Access Startup.....	4
Product Highlights.....	5
New Features in This Version	7
Enhancements in Previous Versions	9
Visit our Web Site	10
Chapter 2: Installing Total Access Startup	11
System Requirements	12
Installing the Program.....	12
Access Database Engine to Support ACCDB Databases	13
Using the Update Wizard.....	13
Uninstalling the Program	14
Chapter 3: Configuring Database Launch Options	15
Preparing for Deployment	16
Total Access Startup Administrator Wizard	18
File Tab: Specify the Settings File.....	20
Master Database Tab.....	21
Access Version Tab	23
Launch Tab.....	25
Local Deployment Tab	28
Splash Screen Tab	30
Exception Tab	33
Create Shortcut.....	34
Chapter 4: Launching Databases	37
Total Access Startup Launcher.....	38
Total Access Startup Redistributable	38
Total Access Startup Runtime License	39
Chapter 5: Advanced Topics	41
Settings File Format	42
Deploying Applications Manually	46
Chapter 6: Troubleshooting and Support	47
Troubleshooting the Errors Users May Encounter	48
Support Resources	50
Web Site Support.....	50
Technical Support Options.....	51
Contacting Technical Support.....	53
Index	55

Welcome to Total Access Startup!

Thank you for selecting Total Access Startup for Microsoft Access! We hope it saves you time and helps ease the task of deploying and maintaining Access databases.

Total Access Startup is developed by FMS, Inc., the leading developer of Access products. In addition to Total Access Startup, we offer a wide range of products for Access developers, administrators, and users:

- [Total Access Analyzer](#) (database documentation)
- [Total Access Admin](#) (database usage monitoring)
- [Total Access Components](#) (ActiveX controls)
- [Total Access Detective](#) (difference detector)
- [Total Access Emailer](#) (email management)
- [Total Access Memo](#) (rich text memos)
- [Total Access Speller](#) (spell checking)
- [Total Access Statistics](#) (statistical analysis program)
- [Total Visual Agent](#) (maintenance and scheduling)
- [Total Visual CodeTools](#) (code builders and managers)
- [Total Visual SourceBook](#) (code library)
- [Total Zip Code Database](#) (city and state lookup lists)

Visit our web site, fmsinc.com, for more information. We also offer Sentinel Visualizer, an advanced data visualization program that identifies relationships among people, places and events through link charts, geospatial mapping, timelines, social network analysis, etc. Visit our Advanced Systems Group at fmsasg.com for details.

Please make sure you sign up for our free email newsletter. This guarantees that you will be contacted in the event of news, upgrades, and beta invitations. Once again, thank you for selecting Total Access Startup.



Luke Chung
President

Chapter 1: Introduction

Discover how Total Access Startup can become your assistant, helping you deploy Access databases. This chapter describes Total Access Startup and how you can use it to ease the burden of database management.

Topics in this Chapter

- **About Total Access Startup**
- **Product Highlights**
- **New Features in This Version**
- **Enhancements in Previous Versions**
- **Visit our Web Site**

About Total Access Startup

Professional Microsoft Access Application Deployment

Microsoft Access developers and administrators face a challenge when it comes to keeping all users in synch with the latest version of the front-end application and running the appropriate version of Access. Total Access Startup makes it easy to deploy Access applications to your users:

- Deploy your Access database application to each user's PC including their profile folder.
- Easily update the user's database when you update the application.
- Automatically set the user's folder to a Trusted Location so macros/VBA are enabled.
- Display your own screen to replace and hide the Access one when your database opens.
- Make sure your database runs with the right Access version or range of versions.
- Make sure your user runs the 32 or 64-bit version of Access with your database.
- Support remote app deployments of Microsoft Access applications.

Manage your Access applications more easily with a professional user experience.

Split Database Architecture

For optimal performance, multi-user databases Access applications should be split into two parts: a "data" database on a shared network drive, and a "front end" database on each user's local computer pointing to the shared data. This lets you update the application (queries, forms, reports, macros, modules, etc.) separate from the data. Read our paper for more information: [Microsoft Access Split Database Architecture to Support Multiuser Environments, Improve Performance, and Simplify Maintainability](#).

Total Access Startup Program Overview

Total Access Startup is a standalone application comprised of three major parts:

Total Access Startup Administrator

The Total Access Startup Administrator is a wizard that helps you define how your database is started and managed. The Administrator allows you to specify:

- The location of the "master" database on the network
- Whether the database is run from the network or copied to each user's machine
- How to identify if the master database is updated
- The primary Access version, bitness, and range of acceptable Access versions.
- Launch settings such as the starting macro and command line options. Files to run and message to display when the local copy is created and/or updated.
- Setting the user's folder to a Trusted Location for Access macros and VBA code to run.
- Splash screen to display as the program starts either as a graphic file or dialog message
- Exception handling with the content to display if an error occurs such as the specified Access version is not installed.

When you complete the Wizard, Total Access Startup lets you create a deployment folder on your network with a shortcut link and settings file (INI file). The INI file includes your specifications, and the shortcut launches your database using these specifications by anyone on your network.

Total Access Startup Launcher Program

The Total Access Startup Standard Launcher (TASStart.exe) is a small executable that runs your database with the options specified selected in the Administrator Wizard. The Standard Launcher detects if 64 bit Access is installed, and redirects to the 64 bit Launcher (TASStart64.exe) if necessary. The INI file and Launcher programs reside on your network for your users. The Launcher programs have no dependencies and do not require your users to have anything installed on their machine other than a copy of Access.

Total Access Startup Redistributable Program

The Total Access Startup Standard Redistributable is a small executable (TASLnch.exe) that can be distributed with your applications royalty-free. The Standard Launcher detects if 64 bit Access is installed, and redirects to the 64 bit Launcher (TASLnch64.exe) if necessary.

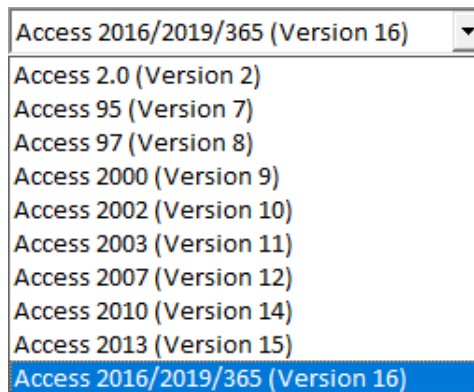
The Launcher programs have no dependencies and do not require your users to have anything installed on their machine other than a copy of Access. The Launchers ensure that your application is always launched using the correct version of Access and the appropriate startup options. See **Total Access Startup Redistributable** on page 38 for details.

Product Highlights

Total Access Startup makes it easier than ever to keep all database users in synch with the correct version of Access, and the latest version of your database. Total Access Startup lets you:

Launch the Correct Version of Access

Total Access Startup always launches the correct version of Access with your database regardless of how many versions of Access are installed or what Windows considers the default program. Total Access Startup supports MDBs, ACCDBs, and ADPs—use it to support all of your database formats!



Note that only one of these versions can be installed on a machine at one time: Access 2016, Access 2019, and the Access version in Office 365. Total Access Startup does not differentiate among them.

Specify a Range of Access Versions

In addition to specifying the primary Access version, you can specify a range of Access versions that are acceptable. For instance, for ACCDB databases, you may allow Access 2016/2019/365 to Access 2007). Total Access Startup looks for Access 2016/2019/365 first and if it can't find that, goes to the next older version.

Specify the Access Bitness

With Office/Access 2010, Microsoft introduced the 64-bit version of Access. Now you have the 32 and 64-bit versions of Access. Your application may only support one of them. Windows API calls, DLL library references, and ActiveX controls are among the features that are bitness specific. If that is the case, you need to make sure you deploy Access with the right bitness Access. You can specify 32-bit only, 64-bit only, or both:



Specify the Access Bitness

Display Customized Error Information

Customize the information that the user sees if there is an error launching the application (e.g. if the user doesn't have the correct version of Access installed). This gracefully handles the problem and allows you to display helpful information, such as troubleshooting tips and the database administrator's contact information.

Deploy Applications to User's Local Machine

If your users are running your application for the first time, Total Access Startup installs the database for them. If there are other files required, you can also launch a batch file or setup program.

Enable Macros for Your Application

Total Access Startup can automatically set your user's folder as a Trusted Location so its macros and VBA code are authorized to run.

Make Sure Users Have the Latest Version

When you update your database, your user's local copy is automatically updated the next time they launch it. You can also show a message to the user, and/or launch a batch file or setup program if additional files need to be installed.

Add a Splash Screen when Your Program Loads and Hide Access

You can specify a graphic file that appears while your program and Access loads while suppressing the Access splash screen from your users:



Use Your Own Splash Screen while Your Program Loads to Replace the Access Screen

Launch the Database with Various Startup Options

Choose from a variety of startup options, such as a executing a macro or command line switch, and opening the database exclusively or in read-only mode.

Manage the Application Centrally

Total Access Startup stores everything centrally so you can deploy your database consistently across all users and easily manage it over time. Just configure your settings in one place, and send shortcuts to all database users. You will never worry about installing the proper dependencies or updating local copies again.



Tip

For optimal performance, your databases should be regularly compacted and backed up. If you do not have an automated process in place, consider **Total Visual Agent** from FMS, which automates these administrative chores. For more information and a demo, visit fmsinc.com.

New Features in This Version

Total Access Startup 2021, Version 17, is the fifth major version of the program since its original release in April 2003. The latest version includes several new features and enhancements, including:

Access 2019 / Office 365 Support

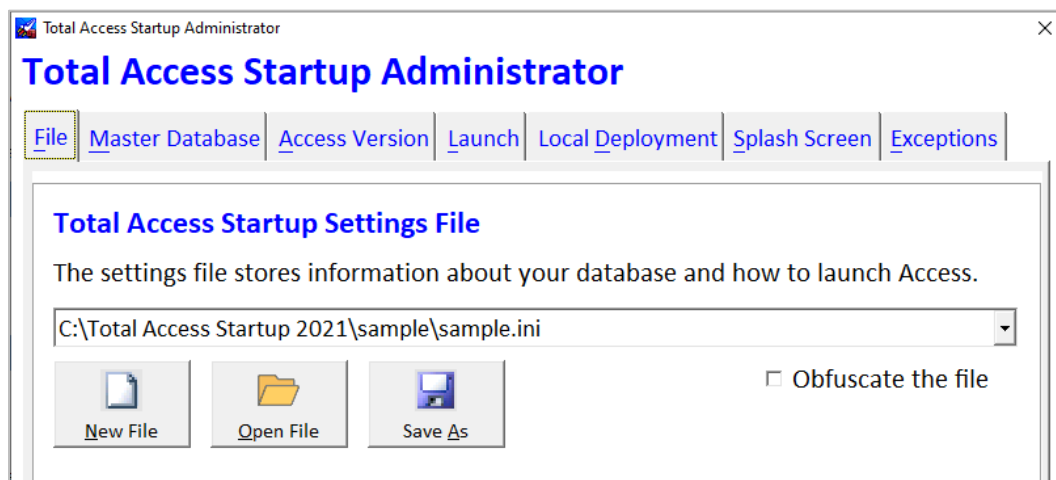
Total Access Startup 2021 supports launching Access 2019 / Office 365. Note that a PC can only have one of these three Access versions installed at one time: 2016, 2019, and Office 365.

Improved User Interface

The Total Access Startup Administrator program form is enlarged with a more modern interface, larger fonts, larger text boxes to show long folder paths, and graphics on open file buttons.

Most Recently Used (MRU) List

There is a Most Recently Used (MRU) combo box that maintains a list of recently opened files, plus New File and Save As buttons:



Obfuscate the Settings File

Your settings for launching your Access applications are stored in an INI listing your choices such as the master database location, Access version to launch, etc. The text is visible and easy to modify.

Obfuscate the file

There is a new option to obfuscate the file so your users cannot see or modify the file unless they use the Total Access Startup administrator program.

Run Your Database from a Trusted Location

To allow Access macros and VBA code to work, Access requires the database to be trusted or in a Trusted Location (folder). If it is not already set, the user is prompted to enable macros.

Run Database from Trusted Location (Enables Module VBA Code)

- Set database folder as Trusted Location
- Subfolders of this location are also trusted

Total Access Startup can now deploy your database to a folder that's automatically set as a Trusted Location along with its subfolders.

Relative Path File Names

You no longer need to enter the full path of your files. This simplifies the deployment of your entire application and host to other locations.

Specify the Startup Splash Screen to Launch Your Program

Display a graphic file

Loading.bmp



If the full path is not provided for a file name, Total Access Startup looks for them from the location of the settings file, and if not found, the location of the TASTart.exe file. This applies to:

- Master database
- Workgroup database
- EXE or Batch files for initial deployment and updates
- Splash graphic file

Hide the EXE/BAT File Launched for Initial Deployment and Updates

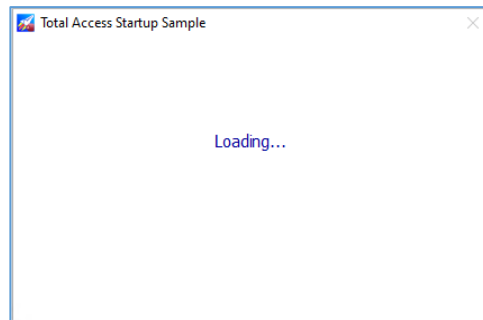
You can specify a file to run the first time a user runs the database or when it is updated.

Run hidden

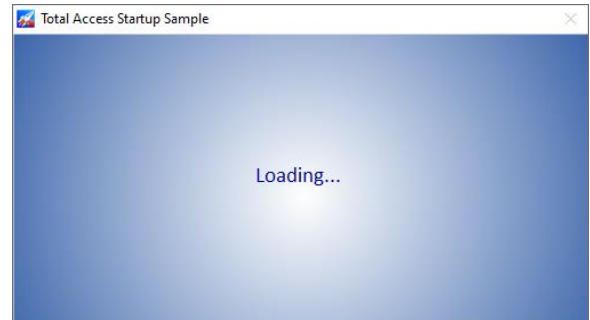
You can now launch them in hidden mode, so users do not see them running. Make sure your program does not require user interaction.

Splash Screen with Background Image

The default splash dialog box had a plain background for your text. The new version has a background image to be more attractive.



Previous Splash Dialog



New Splash Dialog

You also have the option to use your own graphic file as the splash screen when your program loads.

Launch Access with a One Processor Option

There are some situations where Microsoft Access performs better when it is limited to running on One CPU Processor. This option is available when you specify the Access version to run.

Limit to One Processor (Affinity 1)

Enhancements in Previous Versions

Total Access Startup 2016, Version 16

Total Access Startup 2016, Version 16, is the fourth major version of the program since its original release in April 2003. It includes several new features and enhancements:

- Supports Microsoft Access 2013 and 2016
- New Tabbed Interface for the Administrator Wizard
- Specify a Range of Acceptable Access Versions
- Add a Splash Screen when Your Program Loads
- Enhanced Splash Screen Dialog
- Create the Shortcut with Icons
- Over 1,150 icons are included to customize your shortcut
- Customize and Localize Error Messages

Total Access Startup 2010, Version 14

- Support for Microsoft Access 2010, 32 bit and 64-bit Version

Total Access Startup 2007, Version 12

- Support for Microsoft Office Access 2007
- Support for Access Data Projects (ADPs)
- Support for User-Specific Path Variables

- Option to Show a Message on Update
- Option for Launching in a Specified Access Version or Earlier
- Customizable Error Messages
- New User Interface for the Total Access Startup Administrator

Visit our Web Site

FMS is constantly developing new and better developer solutions. Total Access Startup is part of our complete line of products designed specifically for the Access developer. Please take a moment to visit us online at fmsinc.com to find out about new products and updates.

Product Announcements and Press Releases

Read the latest information on new products, new versions, and future products. Press releases are available the same day they are sent to the press. Sign up in our Feedback section to have press releases automatically sent to you via email.

Product Information and Free Trials

Detailed information for all of our products are available. Free trial versions for most of our products are also available.

Product Registration

Register your copy of Total Access Startup on-line. Be sure to select the email notification option so you can be contacted when updates are available or news is released. You must be registered to receive technical support.

Product Updates

FMS is committed to quality software. When we find problems in our products, we fix them and post the new builds on our web site. Check our Product Updates page in the Technical Support area for the latest build.

Technical Papers, Tips and Tricks

FMS personnel often speak at conferences and write magazine articles, papers, and books. Copies and portions of this information are available to you online. Learn about our latest ideas and tricks for developing more effectively.

Social Media: Blog, Facebook, Twitter

- Participate in our Blog: <https://blog.fmsinc.com/>
- Like our Facebook page: <https://facebook.com/MicrosoftAccessProducts>
- Follow us on Twitter: <https://twitter.com/fmsinc>

Links to Other Development Sites

Jump to other locations, including forums, user groups, and other sites with news, techniques, and related services from our [web site](#).

Chapter 2: Installing Total Access Startup

Total Access Startup comes with an automated setup program to get you up and running as quickly as possible. This chapter describes Total Access Startup's system requirements, installation steps, and instructions for uninstalling.

Topics in this Chapter

- **System Requirements**
- **Installing the Program**
- **Access Database Engine to Support ACCDB Databases**
- **Using the Update Wizard**
- **Uninstalling the Program**

System Requirements

The Total Access Startup Administrator program has the following system requirements:

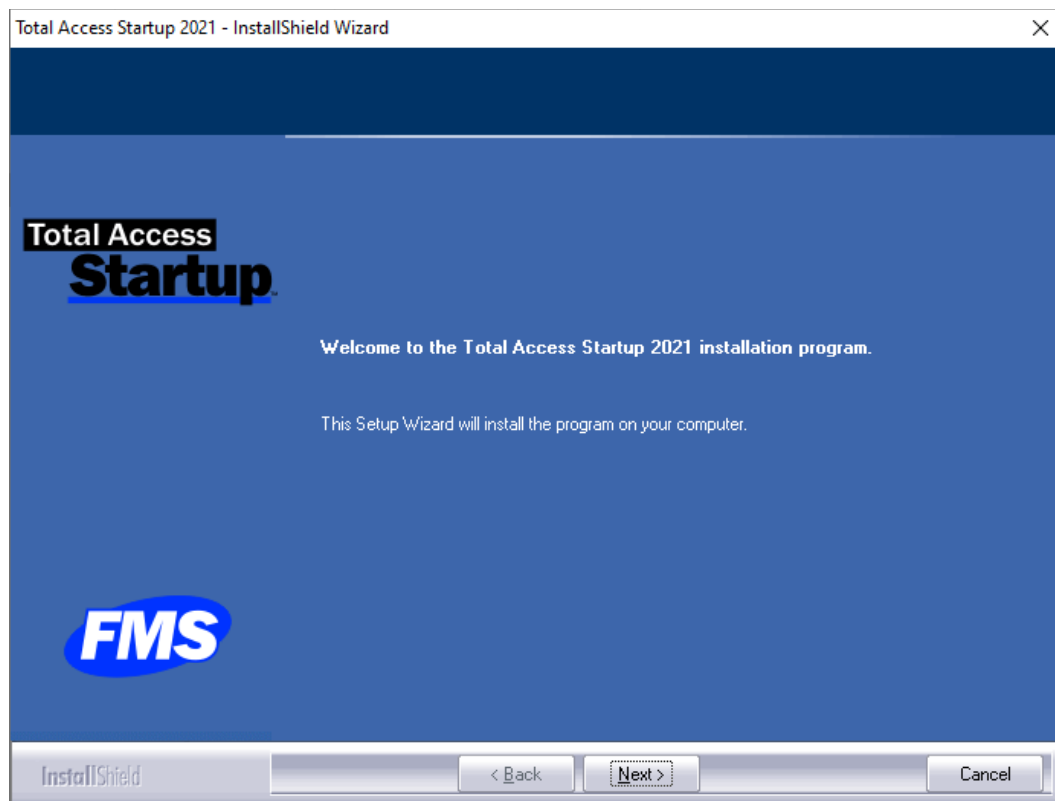
1. Operating system, processor, and memory that can run VB6 applications successfully
2. 25 MB of free disk space to install the product
3. To configure Total Access Startup for use with an ACCDB file, you must run Total Access Startup Administrator on a computer with Access 2007 or later installed.

Installing the Program

Only the Administrator (the person specifying the settings necessary for the users to launch the Access application) needs to install Total Access Startup. Your users do not need to run an installation program. In fact, they only launch their shortcut from the network and no Total Access Startup files are ever installed on their machine.

Total Access Startup is installed using an automated setup program. To install Total Access Startup, run the startup program:

1. Locate and run the setup program.
2. When prompted, enter your registration information and product key (serial number).
3. Specify the destination directory for the files.
4. Read the README file for any late breaking news that is not included in this User Guide.



First Installation Page

Access Database Engine to Support ACCDB Databases

The Access Database Engine (ACE) is necessary to support ACCDB databases. It is already installed if Access 2007 or 2010 is installed. However, when Access is installed with Office 365, ACE is installed but sandboxed inside Office. That means other programs cannot use it to support Access ACCDB databases. This not only includes FMS products, but also causes problems for Microsoft products such as Power BI.

Microsoft is planning to make ACE available in the future when Office 365 is installed, but until then, we may need to manually install ACE.

Fortunately, the Total Access Startup setup program installs the 32-bit version of Access 2010 ACE.

If it is not available, a warning message appears when you run the Administrator Wizard and select an ACCDB database. The program is available as a free download from Microsoft:

<https://microsoft.com/en-us/download/details.aspx?id=54920>

If Microsoft changed the location, visit our web site:

<https://fmsinc.com/go.asp?2332>

The Total Access Startup Launcher and Redistributable programs have no additional file or system requirements. If your users do not have ACE installed, and you request the database is only updated if a value changes in your version table, it is always updated.

Using the Update Wizard

If you are registered, you should receive emails from FMS when updates are released for the products. To verify you have the latest build, you can use the Total Access Startup Update Wizard with an active Internet connection.

From the main Windows menu, select Total Access Startup, Update Wizard:

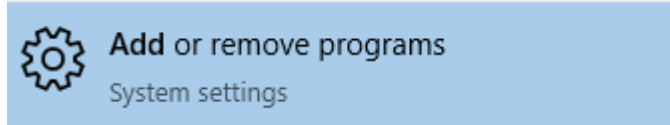


Press the [Check for Latest Version] button to see if you are running the latest version.

Uninstalling the Program

Total Access Startup conforms to Windows installation and removal standards. To uninstall Total Access Startup:

1. From Windows, search “Add or remove programs” and launch it (also under Control Panel)



2. Under Apps & Features, select Total Access Startup from the list of installed programs
3. Click the program to display the Uninstall button
4. Follow the onscreen prompts to uninstall the product. Choose Remove and press Next:



Note that the uninstall process does not remove any files created by Total Access Startup after it was installed. For example, a temporary database may still exist in the Total Access Startup directory. After uninstalling the product, check the directory where it was originally installed for any remaining files that need to be manually deleted.

Chapter 3: Configuring Database Launch Options

Total Access Startup is comprised of three sets of executables: the Total Access Startup Administrator, the Total Access Startup Launcher, and the Total Access Startup Redistributable. This chapter provides information about preparing your database for distribution and using the Total Access Startup Administrator to configure the database launch options.

Topics in this Chapter

- **Preparing for Deployment**
- **Total Access Startup Administrator Wizard**
- **File Tab: Specify the Settings File**
- **Master Database Tab**
- **Access Version Tab**
- **Launch Tab**
- **Local Deployment Tab**
- **Splash Screen Tab**
- **Exception Tab**
- **Create Shortcut**

Preparing for Deployment

Before using Total Access Startup to deploy and manage your database, determine how you would like to deploy the master database. Total Access Startup offers two options:

Launch Master Database from Network Location

Select this option if you do not want Total Access Startup to copy the master database to the user's local machine. With this option, the master database is launched from the network location, always using the correct version of Access and startup options. This is the simplest way to ensure a shared database is launched with the correct version of Access, but it should generally not be used if multiple users access the database simultaneously or if performance and network traffic are issues.

Deploy Master Database to User's Local Machine

Select this option if you would like Total Access Startup to copy the master database to a specified location on each user's local machine. Total Access Startup keeps the local copy in sync with the master database using a Version table that you specify. The local database is always launched with the correct version of Access. This option is generally selected for multi-user databases that are accessed by several users simultaneously.



If you plan to redistribute your application using TASLnch.exe, choose **Launch Master Database from Network Location**. Copying the database to the user's local machine is not supported with the redistributable runtime license. See page 38 for details.

Reading Tables in Access ACCDB database

If Access 2007 or 2010 is not installed on the machine, programs outside of Access cannot read Access tables in ACCDB databases. To support the ability to read the Version table in your database, each of your users may need to install the free Microsoft Access Database Engine:

<https://fmsinc.com/go.asp?2332>

Note, this is never a problem, if:

- Your master database is in MDB or ADP format.
- Access 2007 or 2010 is installed on the PC (retail or runtime)

Preparing the Master Database

The deploy method determines the steps necessary to prepare your database. No additional steps are necessary if you choose to:

- Launch the master database from the network location, or
- Always copy the master database to the user's machine without checking its version

You are ready to use the **Total Access Startup Administrator Wizard** (skip ahead to page 18).

If you choose to check the version and copy the database to the user's local machine, there are a few simple steps to take to prepare your database.

Preparing MDB/ACCDB Databases

For standard databases (MDBs and ACCDBs), Total Access Startup uses a field to determine if the user's local copy is up-to-date with the master database. The master database must include a table and field to store version information.

First, locate the master database that you want to distribute, and add a table to designate the version. There are no restrictions on the table or field name, or the data type of the Version field, however we recommend the following:

- Create a local table named **Version**. Consider making this table hidden, so that users do not inadvertently modify the version number. If you name the table usysVersion, it is automatically a user system table, and is hidden unless the Access "View System Tables" option is turned on.
- Add one field to the table. This field can also be named **Version**, and it can have any data type.

The Version table is what Total Access Startup uses to keep user databases in sync with the master database. Whenever modifications are made to the master database, update the Version field to distribute the latest version to your users.

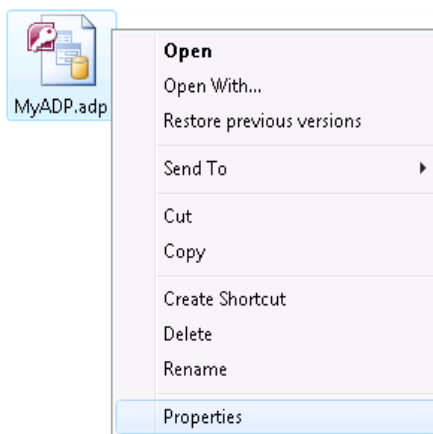


Total Access Startup determines the version by comparing the first record in the Version tables. If the values are different, Total Access Startup considers the master database updated and replaces the local one. Note that it is not checking to see if one value is larger than the other.

Preparing Access Data Projects (ADPs)

Since ADP tables Access Data Projects don't contain local tables, Total Access Startup uses a custom property to keep local copies up-to-date.

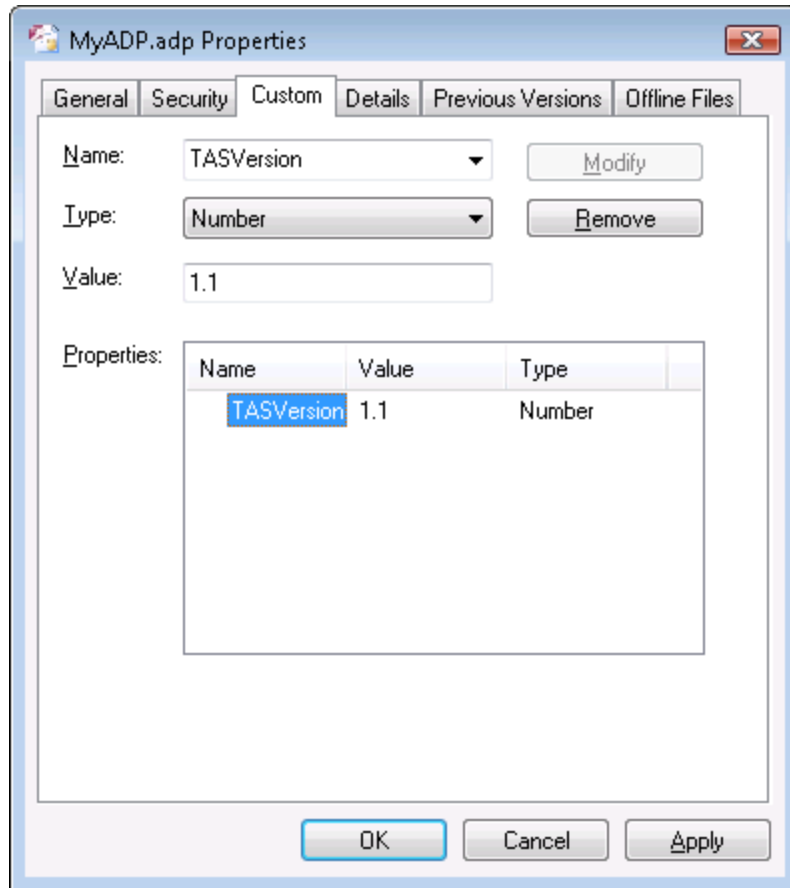
To set the custom property, locate the ADP that you want to distribute in Windows Explorer. Right-click on the ADP file, and choose "Properties":



ADP File, Context Menu

On the Custom tab of the Properties dialog, enter the following information, and click Add:

- Name: TASVersion
- Type: Any (Number is recommended)
- Value: Your program's version number



ADP Custom Properties

When you release a new version of your application, increment the Value, and click Apply.

Total Access Startup Administrator Wizard

The Total Access Startup Administrator program is an easy-to-use wizard that guides you through the process of setting up the launch options.

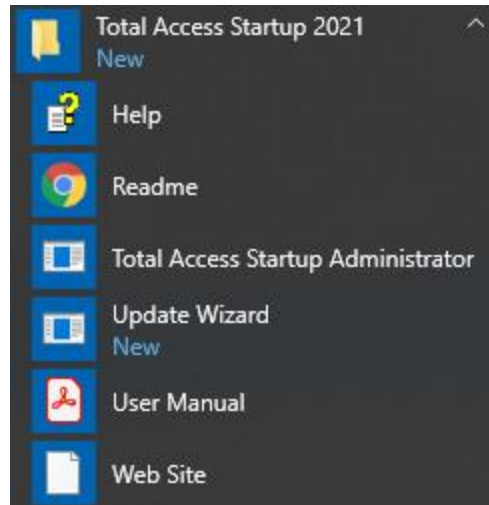
Objective: Create the Startup Settings File

The purpose of the Administrator program is to create a text file (*.INI file) that is used by the launcher so your users can click a shortcut and start your Microsoft Access application with the options you have specified

Starting the Administrator Program

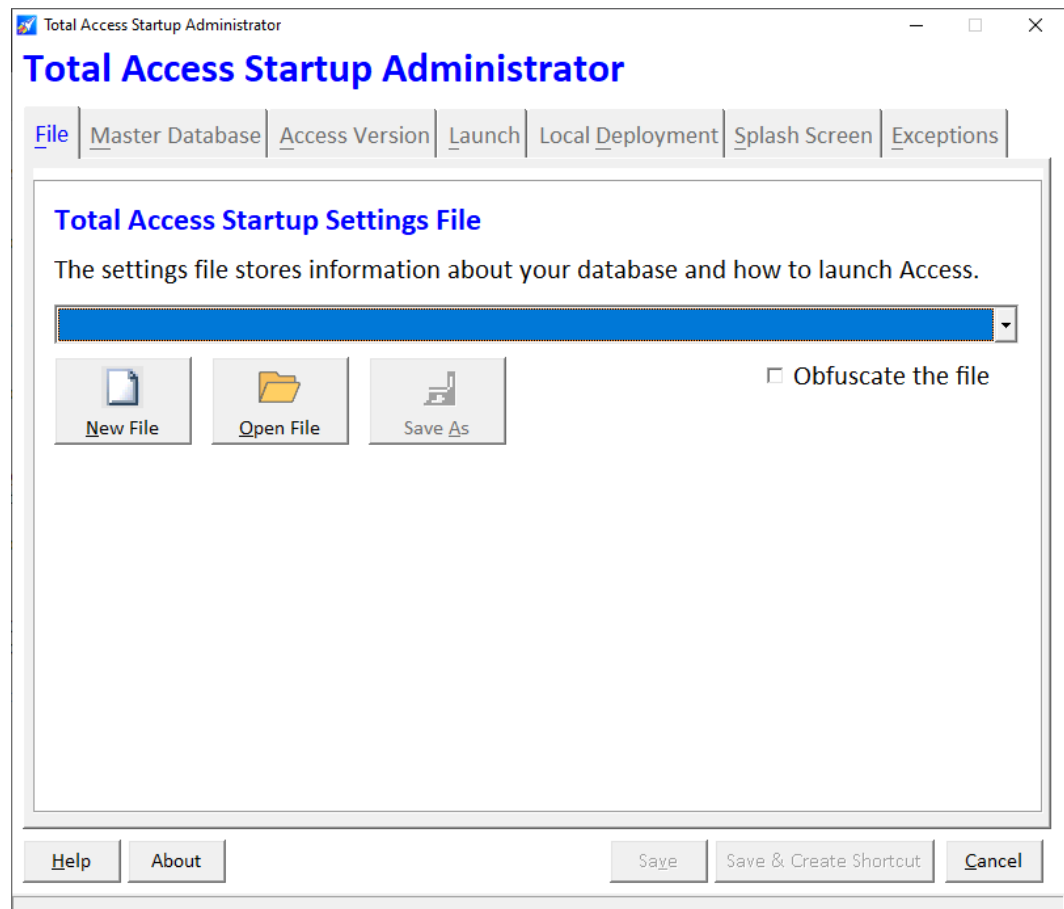
The installation program installed Total Access Startup and adds it to your Windows menu under "Total Access Startup 2021".

- For Window 7 and earlier, it is under the FMS folder.
- For Windows 8 and later (which does not use submenus by company), it is directly on the Windows, All Apps menu:



Total Access Startup on Windows 10 Menu

When the Administrator program opens, a tabbed Wizard appears:



Total Access Startup Administrator Program

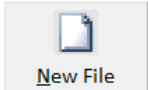
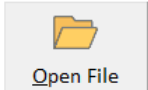
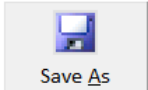
File Tab: Specify the Settings File

On the first tab of the Total Access Startup Administrator Wizard, specify the file name for the Settings INI file. If no file is specified, none of the other tabs are enabled.

Total Access Startup Settings File

The settings file stores information about your database and how to launch Access.

C:\Total Access Startup 2021\sample\sample.ini

   Obfuscate the file

Specify the Name of Your INI Settings File

Open an existing file by clicking the [Open File] button. Use [Save As] to save it as a new name.

More Recently Used (MRU) List

The combo box displays the most recently used (MRU) list of files. If you choose a file that no longer exists or cannot be opened, an option appears to remove it from the list.

Obfuscate the Values in the File

By default, the INI is a standard INI file with a separate row for each option in plain text. This makes it easy if you want to edit the text in Notepad.

```
[Database]
Deploy=1
AutoLogin=1
LocalDeployAlways=0
UpdateContinue=0
Local Database=C:\Total Access Startup\deploy\sample.mdb
Master Database=C:\Total Access Startup\sample\sample.mdb
[Program]
Command Line=
```

Sample Settings INI File Contents

The 2021 version introduces an option to obfuscate the file so that it is not so easy to read or modify. Just check this option:

Obfuscate the file

The file becomes:

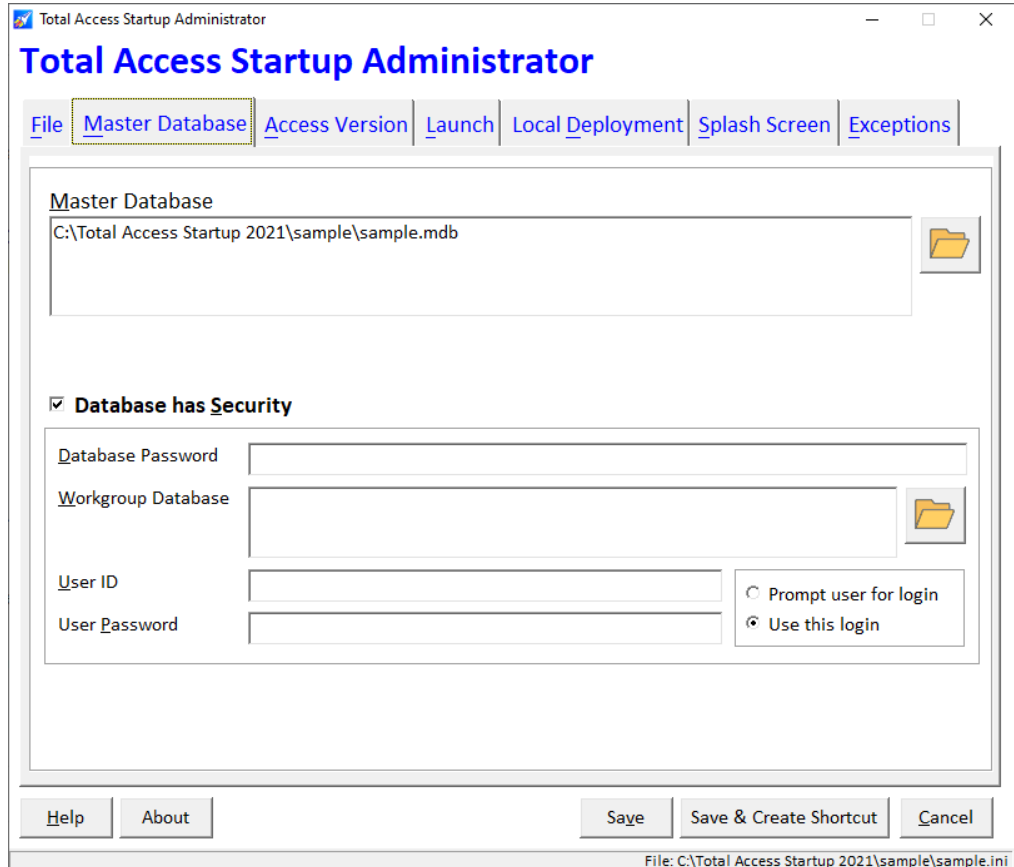
```
Total Access Startup:
019116085069082036087050048028052
032064041035047067087009002037058
090085080088057096091069093036051
041067081012062076122046054032085
```

Obfuscated Settings INI File Contents

You can always read or modify it by opening the file again with this administrator program.

Master Database Tab

Browse to the location of the master database. The master database should exist in a shared network location that all users have access. The master database is what copied to the user's local computer when Total Access Startup deploys the application, and is used for version comparison to determine whether the user has the latest version.



Master Database Tab

Use UNC Path rather than Mapped Network Drive, or Relative Paths

Use the UNC path rather than mapped drives to avoid mapping differences. Mapped drives can only be used if you are sure all your users have the same drive mapping.

For instance, use:

```
\\NetworkDrive\Accounting\AccountingApp.mdb
```

Rather than:

```
K:\Accounting\AccountingApp.mdb
```


You can omit the path if the INI file is distributed in the same folder as the master database.

Database Security

If your database has security, check the “Database has Security box” and specify either the database password or workgroup security settings:

Database has Security

Database Password

Workgroup Database 

User ID

User Password

Prompt user for login

Use this login

Database Security Settings

Database Password

If the database has a password, enter it in the **Database Password** field.

Workgroup Security

If the database uses workgroup security, use the File Open button to locate the workgroup database (*.MDW). Then enter the user name and password that should be used to open the database. Finally, select the appropriate login option:

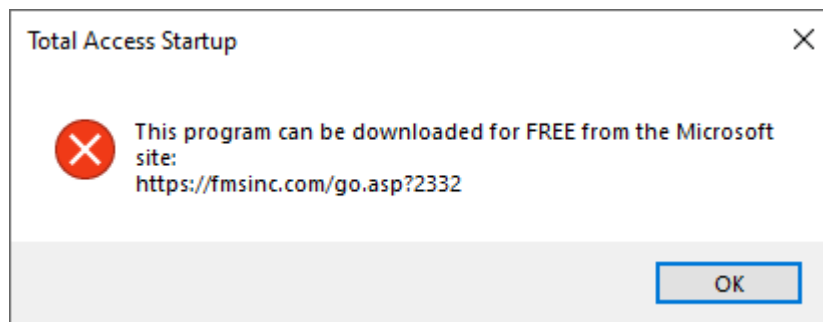
Prompt user for login

Use this login

- “Prompt for Login” requires the user to log into the secure database when it is launched.
- “Use this Login” always uses the login name and password that you enter in Total Access Startup (the user is never prompted for login information).

Access Database Engine Error

When you select an ACCDB database (Access 2007 or later format), and leave this tab, Total Access Startup loads the database’s list of tables and macros. This message may appear:

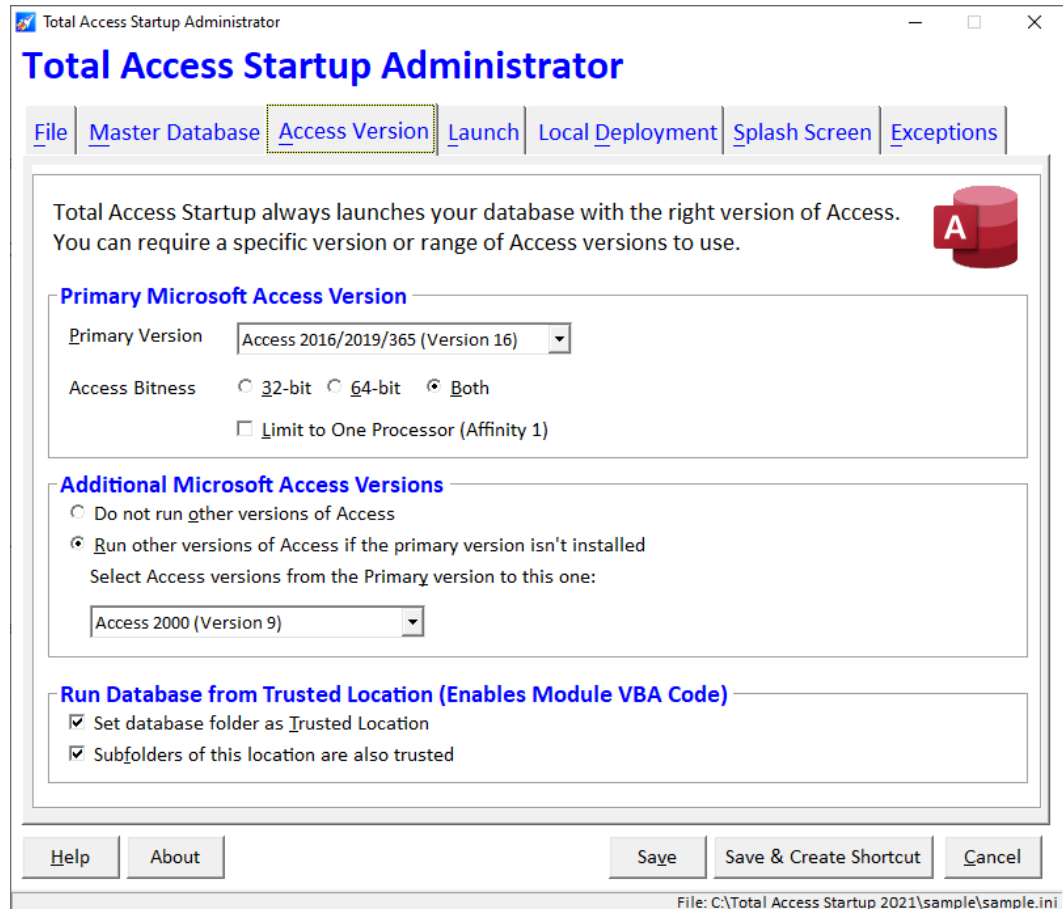


Access Database Engine Error

If you see that message, visit **Access Database Engine to Support ACCDB Databases** on page 13 for more information.

Access Version Tab

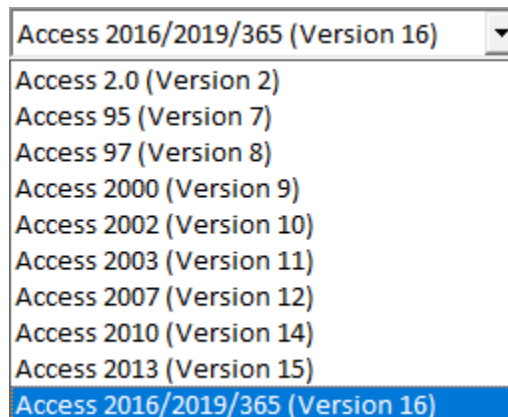
Total Access Startup lets you specify the exact Microsoft Access version or range of Access versions to run your database. You can also specify the processor type:



Microsoft Access Version Tab

Primary Microsoft Access Version

Choose the preferred Access version to run your program:



Select the Primary Access Version

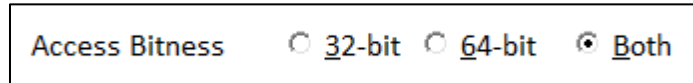
Total Access Startup looks for this Access version first when trying to launch your database.

Access Processor Bitness: 32 or 64-bit

Microsoft Access 2010, 2013, and 2016 come in 32 and 64-bit versions. Only one of the bitness types of an Access version can be installed at one time. Both cannot be installed at once.

Depending on your database, it may only support one of the versions. Windows API calls, ActiveX controls, DLLs, referenced libraries, and other objects may be bitness specific.

Total Access Startup lets you restrict the processor bitness of Access that your users launch.



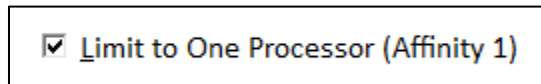
Access Bitness 32-bit 64-bit Both

Specify Access Processor Bitness

Choose Both if your database supports 32 and 64-bit versions. See page 46 for details about deploying databases with support for 64 bit Access.

Limit to One Processor (Affinity 1)

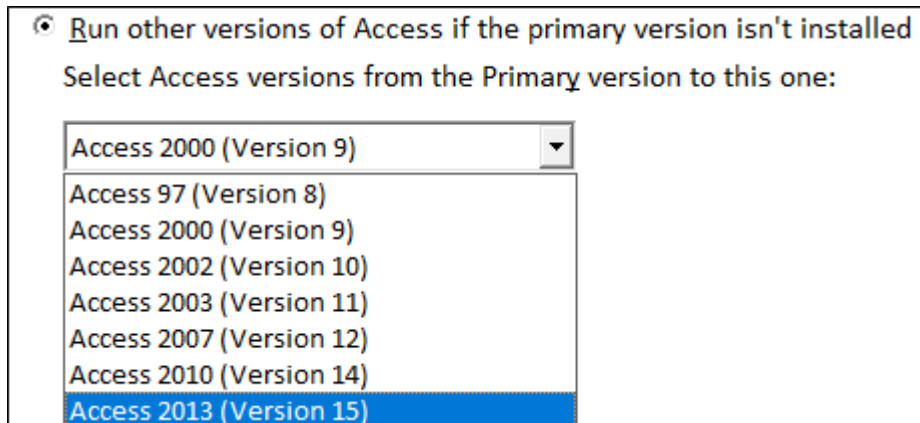
By default, Microsoft Access supports multi-core CPI processing. On some virtual machines and PC, you can limit your Microsoft Access application to just one processor by checking this option.



Limit to One Processor (Affinity 1)

Additional Microsoft Access Versions

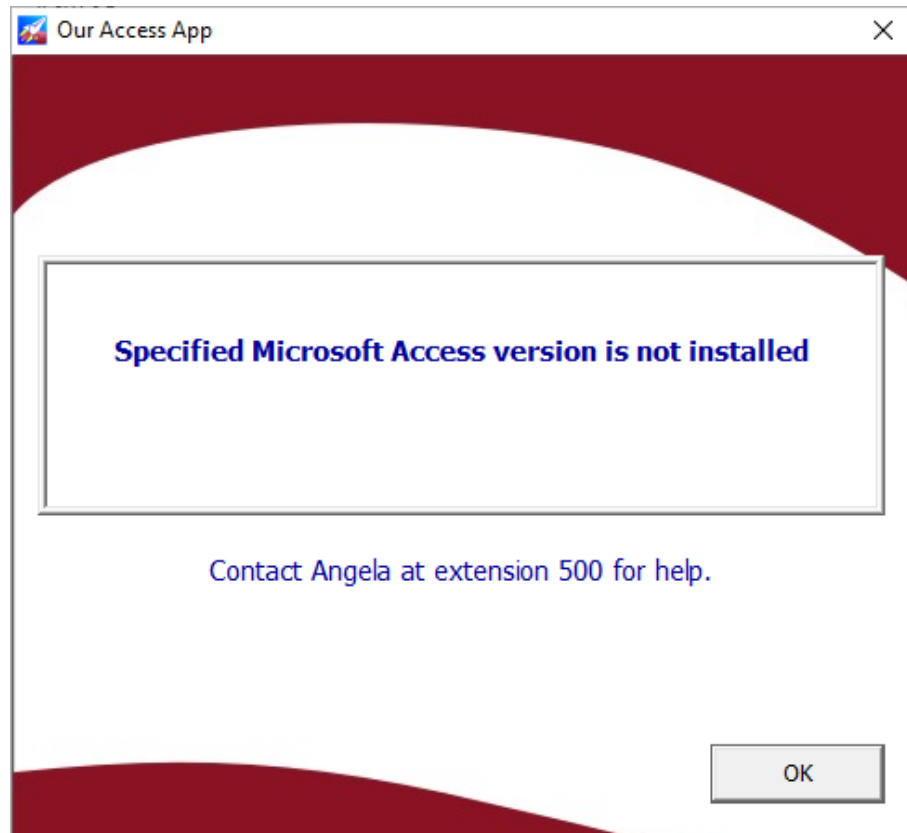
You can require your application to only use the Primary Access version specified or allow other Access versions too:



Run other versions of Access if the primary version isn't installed
Select Access versions from the Primary version to this one:

Access 2000 (Version 9)	▼
Access 97 (Version 8)	
Access 2000 (Version 9)	
Access 2002 (Version 10)	
Access 2003 (Version 11)	
Access 2007 (Version 12)	
Access 2010 (Version 14)	
Access 2013 (Version 15)	

Set the range by specifying the last Access version users can run. When launching your database, Total Access Startup searches for the primary Access version you requested. If it is not found, it searches for every Access version to the version specified in your range and launches the first one it finds. If it cannot find any, it shows this message:



Warning Message if Access Version is not Installed

Run Your Database from a Trusted Location

To allow Access macros and VBA code to work, Access requires the database to be trusted or in a Trusted Location (folder). If it is not already set, the user is prompted to enable macros.

Run Database from Trusted Location (Enables Module VBA Code)

- Set database folder as Trusted Location
- Subfolders of this location are also trusted

With these checkboxes, Total Access Startup sets the folder where you deploy your database as a Trusted Location. You can also make its subfolders trusted too.

Launch Tab

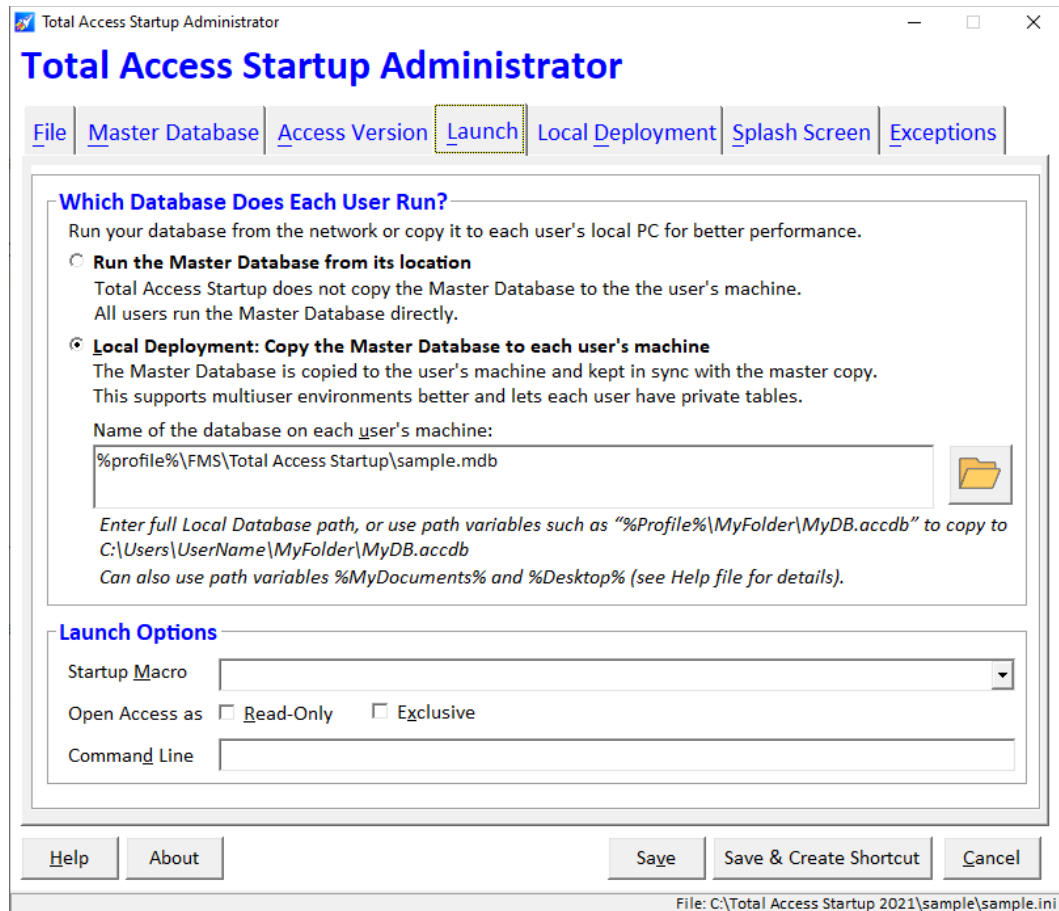
Specify whether all users run the same Master database from its network location, or whether a copy is made on each local machine.

Split Database Architecture

Each user having their own copy of the database is the best way to support multiuser Microsoft Access applications. This split database architecture allows the front-end database to have private tables for each user and links to tables in a backend database or databases in Access, SQL Server, or other formats.

Total Access Startup makes it easy to update each user's database when the master copy is updated. See **Preparing for Deployment** on page 16 for information about selecting the right deployment method.

Which Database Does Each User Run?



Launch Tab

Network Deployment

No copy of the master database is made. Every user runs the master database directly for its network location.

Local Deployment

If Local Deployment is selected, specify the name of the folder and database where it should be copied on each user's machine.

If the database does not exist, Total Access Startup creates it the first time it is run. If the database exists, Total Access Startup checks the version, updates it if necessary, and launches the database with the specified version of Access.

• **Local Deployment: Copy the Master Database to each user's machine**

The Master Database is copied to the user's machine and kept in sync with the master copy. This supports multiuser environments better and lets each user have private tables.

Name of the database on each user's machine:

%profile%\FMS\Total Access Startup\sample.mdb



Enter full Local Database path, or use path variables such as “%Profile%\MyFolder\MyDB.accdb” to copy to C:\Users\UserName\MyFolder\MyDB.accdb

Can also use path variables %MyDocuments% and %Desktop% (see Help file for details).

Local Deployment Database Name

Path Variables

Total Access Startup includes support for the following user-specific path variables to copy the master database to the user's folder:

- **%MyDocuments%**
e.g. type “%MyDocuments%\MyDB.accdb” to copy to C:\Documents and Settings\UserName\My Documents\MyDB.mdb
- **%Desktop%**
e.g. type “%Desktop%\MyDB.mdb” to copy to C:\Documents and Settings\UserName\Desktop\MyDB.accdb
- **%Profile%**
e.g. type “%Profile%\MyFolder\MyDB.accdb” to copy to C:\Users\UserName\MyFolder\MyDB.accdb

These path variables are important if multiple users are using the same machine and need to have separate copies of the front-end database. It is also important if you are running Microsoft Access in Terminal Server, Citrix, or Windows RemoteApp sessions.

Launch Options

Startup Macro

Optionally specify a macro to run when the database is launched. If not specified, the Autoexec macro or your startup form launches.

Open Access: Read-Only

Check this option if you want the database to be opened read-only when Total Access Startup launches it. This prohibits users from making any modifications to the database. Note that if you deploy the database locally, the local database (not the master database) is opened read-only.

Open Access: Exclusive

Check this option if you want the database to be opened exclusively when Total Access Startup launches it. That means no other instances of Access can open it. Exclusive does not apply if Read-Only is checked.

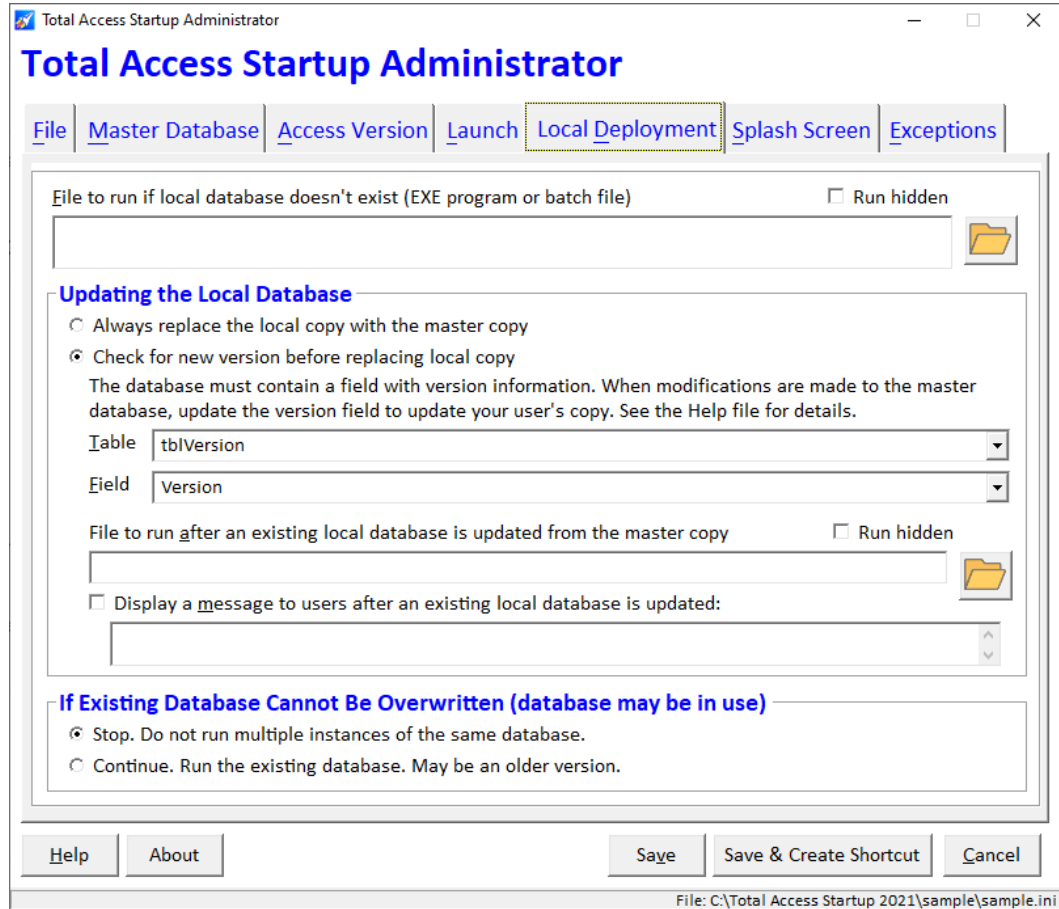
Note that if you deploy the database locally, the local database (not the master database) is opened exclusive.

Command Line

You can optionally specify a command line to run when the database is launched. Refer to the *Command Function* topic in the Access documentation for details.

Local Deployment Tab

The options on this tab are available if Local Deployment is selected on the Launch tab (they are not available if Network Deployment is selected).



Local Deployment Tab

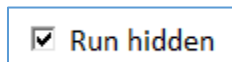
File to run if local database doesn't exist

If the local database doesn't exist, Total Access Startup automatically copies it from the master database and creates the directory if necessary. Before the database is created, Total Access Startup can optionally execute a startup program or batch file. Use this feature to register custom controls, display a help or Readme file, or run a program before deployment. The file needs to be on a shared network folder that all your users can see.

Note that if your setup program installs your Access database, Total Access Startup verifies it's the latest version before the user launches it. This lets you use old setup programs that install all the related files and settings without worrying about updating the latest version of your Access database.

Run Hidden to Hide the File You Run

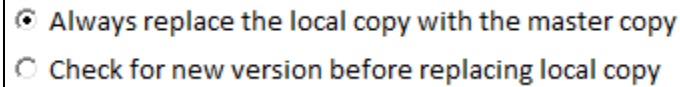
By default, when you run a BAT file, a DOS Command Prompt dialog appears. The Run Hidden option lets you run your file with that hidden.



Make sure your hidden program does not require user interaction since they will not be able to see it and your program will not finish.

Updating the Local Database

There are several options to customize the way the local database is updated for each user. The first decision is whether the local copy is always replaced or if the version is checked before replacing it:

- 
- Always replace the local copy with the master copy
 - Check for new version before replacing local copy

Specify How the Local Database is Updated

Always Replace the Local Copy

This option is appropriate if:

- Your network speed is fast, and database is relatively small
- You do not want to set the version of the master database
- Your master database is in ACCDB format and your user's environment does not support reading its tables. See **Reading Tables in Access ACCDB database** on page 16 for details

Check for New Version Before Replacing

The second option is appropriate if:

- A table is created in your database to designate its version
- For ACCDB databases using Access 2013 or later, your users' machines allow programs to read its tables

See **Preparing for Deployment** on page 16 for information about selecting the deployment method.

Version Table and Field

Define the table and field that specify the version of your master database:

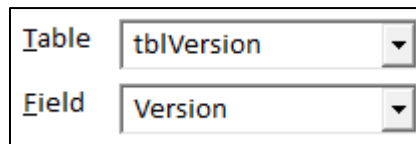


Table	tblVersion
Field	Version

Select the Version Table and Field

- Select the name of the table with the version information. This table must exist in the database (not a linked table) and determines whether the user has the latest version.
- Select the name of the field holding the version information. This field identifies the version of this database to compare with the user's current copy.

For more information, see **Reading Tables in Access ACCDB database** on page 16.

File to run after local database is updated

Before the local database is updated with a new version, Total Access Startup can optionally execute a program. Use this feature to run a program or batch (*.BAT) file when the database is updated. The file should be on a shared network folder that all your users have permissions to run. The Run Hidden option is also available here.

Display message to users after an existing local database is updated

<input checked="" type="checkbox"/> Display a <u>m</u> essage to users after an existing local database is updated:
Update Installed

Update Message Option and Text

Check this check box, and type a message to show to users after their local copy of the database is updated. This message is not displayed the first time the database is created locally, only when the database is updated.

If Existing Database Cannot be Overwritten

When Total Access Startup tries to update the local database, it may fail if it is already open and locked in Access. For instance, the user already has the database open in another instance of Access.

If Existing Database Cannot Be Overwritten (database may be in use)

- Stop. Do not run multiple instances of the same database.
- Continue. Run the existing database. May be an older version.

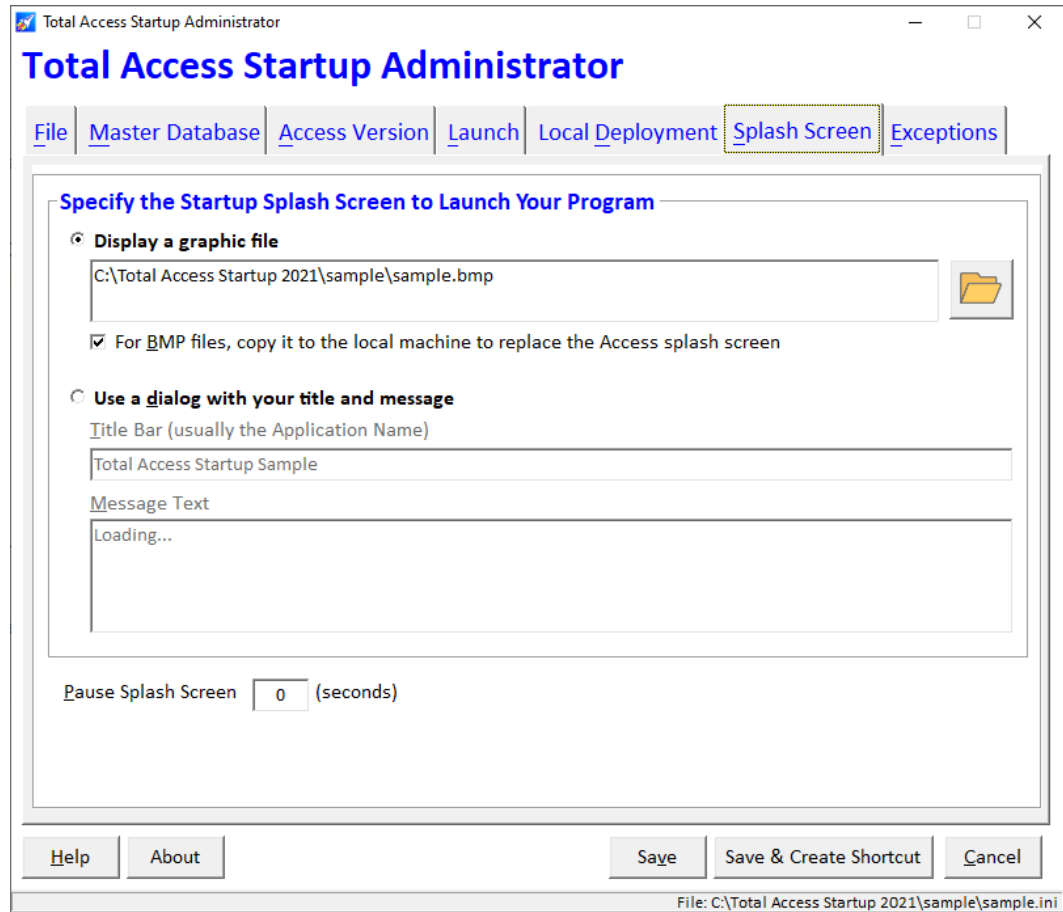
There are two options. If you choose Stop, your database is not run, and a warning message is displayed. Choose Continue to launch the existing local database even if it is out-of-date.

Splash Screen Tab

Total Access Startup can display a splash screen while your database loads. This provides a more professional experience for your users.

There is a short delay while Total Access Startup checks version information and copies the local database. This tab lets you specify what is displayed while Total Access Startup launches your database.

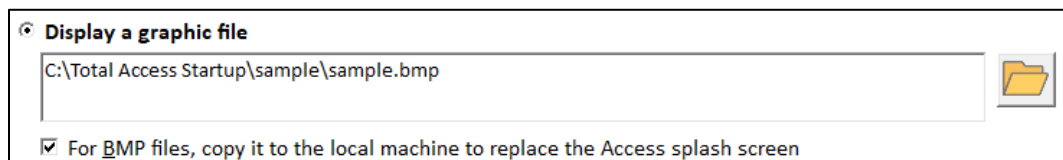
The splash screen can be a graphic file you create or a simple text dialog you specify:



Splash Screen Options

Graphic File Splash Screen

Create and display your own graphic file in BMP, GIF, JPG, and PNG formats. Specify the graphic that appears when your database is launched:



Make sure the graphic file is on a shared network folder and not your local drive so your users can see it. You can omit the path to your file name if the settings file is placed in the same folder.

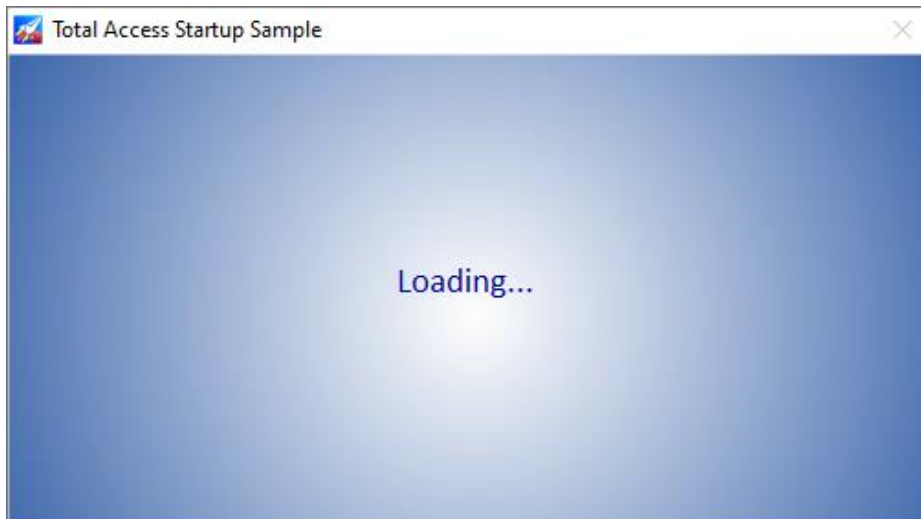
If the graphic file is a BMP file, there is an option to hide the Access splash form from your users while Access is loading. With the sample database launcher, this Sample.bmp file launches:



Sample Splash Screen

Dialog Splash Screen

During this time, the user sees a Startup Screen, similar to the following:



Startup Screen

Title Bar

The Title Bar option allows you to specify the text that appears in this message's title bar. In general, this should be the name of the application that is starting.

Message Text

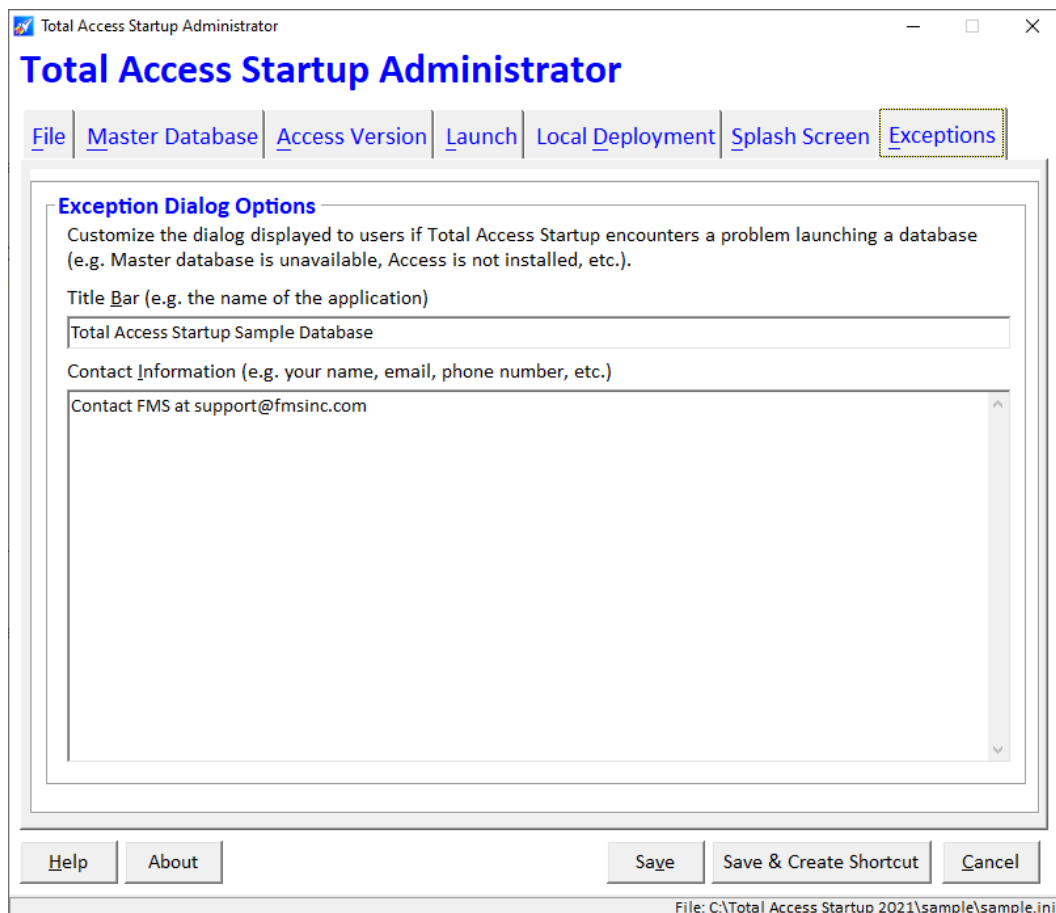
This option allows you to specify the text that shows in the Startup Screen.

Pause Splash Screen

There is an option to delay the launching of Access, so the splash screen appears for a longer period of time. Specify the seconds from 0 to 60.

Exception Tab

If Total Access Startup encounters a problem, it may not be able to open the database (for instance if the correct version of Access is not installed). This page allows you to customize the information that the user sees if a problem occurs:



Exception Tab

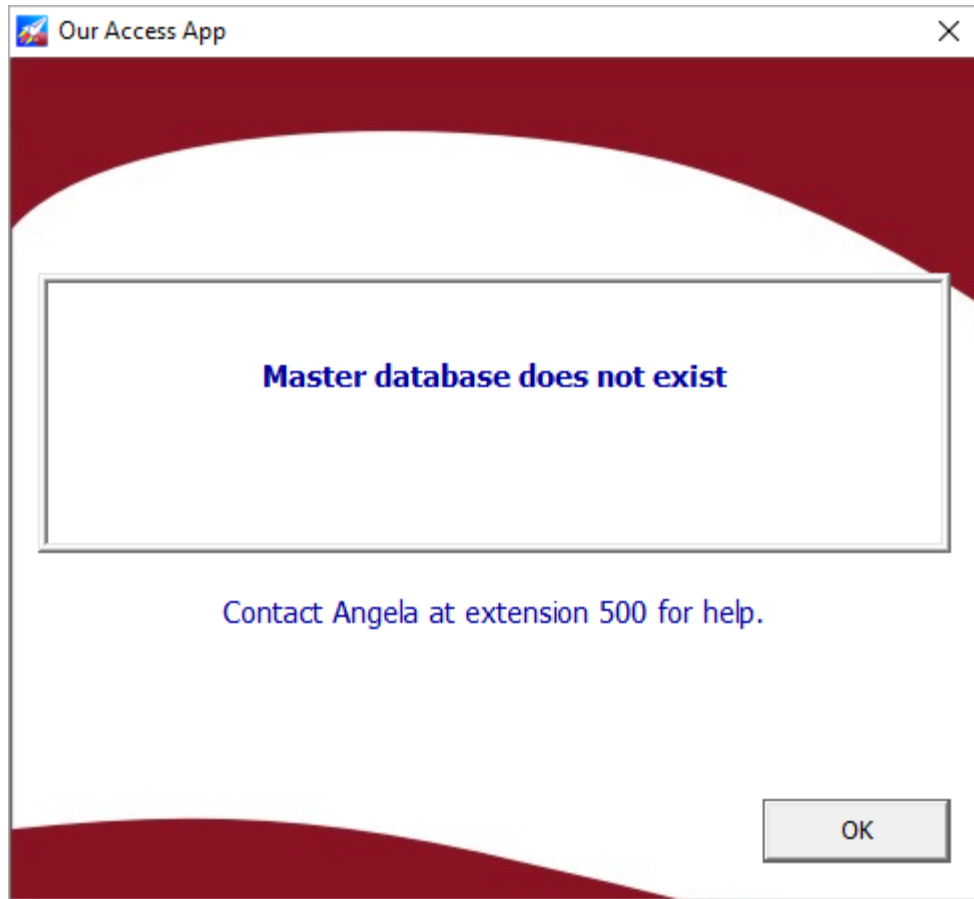
Title Bar

Specify the text that appears in this message's title bar. In general, this should be the name of the application.

Contact Information

Specify the message text to be displayed. This should generally include contact information for the database administrator. Additional information can also be provided.

If your user encounters a problem running Total Access Startup, a message appears with the error and your contact information:



Database Error Message

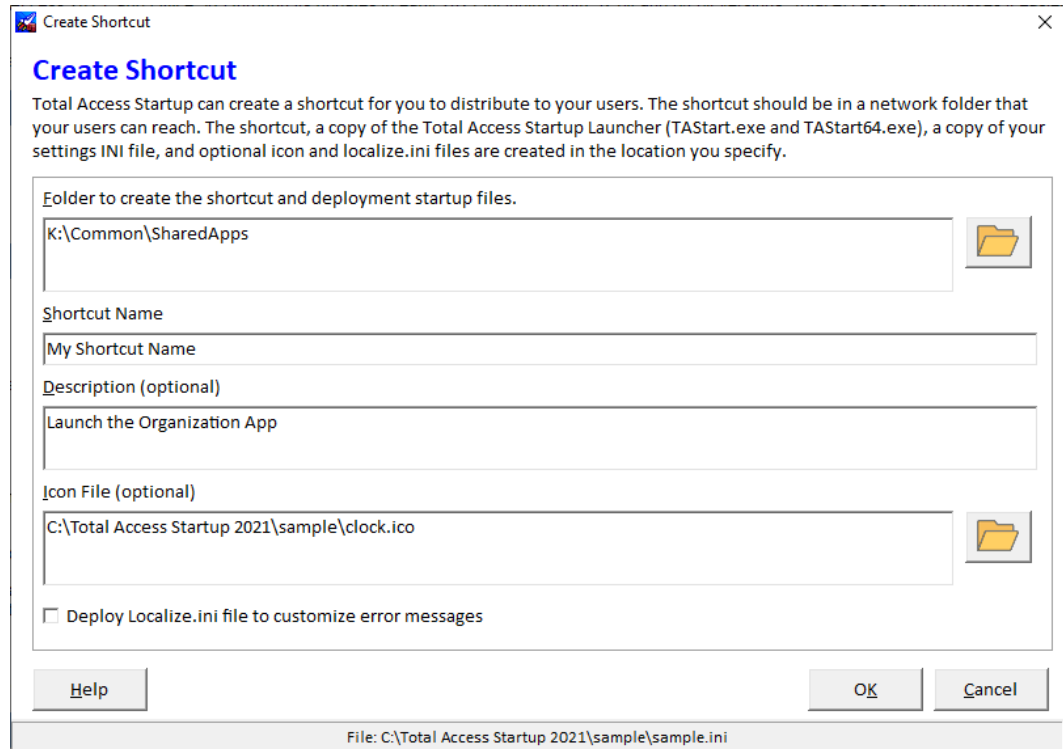
When you are done with your selections, press the [Save] button to save it to the INI file specified on the File tab. Or press the [Save & Create Shortcut] to deploy it.

Create Shortcut

Create a Windows shortcut on your network that your users can click to launch your Microsoft Access application with the settings you have specified.

Deploy your shortcut in a folder separate from your master database so your users never touch your database directly. You can easily update the INI file if you need to move your application files to other places.

The [Save & Create Shortcut] button does this for you:



Create Shortcut Options

Folder Location

Specify the network path where the shortcut and startup files are created. This should be a shared network location that all users can access.

Shortcut Name

Provide a name that users see for the shortcut.

Description

Optionally enter a description for the shortcut. The description is the tool tip that appears when the mouse hovers over the shortcut.

Icon File

Optionally add an icon for the shortcut. Choose among the 1150+ icons in the icons folder where Total Access Startup is installed.

Deploy Localization File

The Localize.ini file lets you change the error messages that the Total Access Startup launcher shows to your users. You can modify the text and translate it to another language. If it is in the folder where the launcher is located, it uses your text instead of the built-in English sentences. If you check this option, the Localize.ini file in the Total Access Startup installation folder is copied to your deployment folder.

Finishing Up

Press [OK] to create the shortcut. These files are put in the folder:

- A copy of your settings INI file
- Total Access Startup Launcher programs: TStart.exe and TStart64.exe
- A shortcut to the launcher program and your settings file
- The icon ICO file if you selected that for your shortcut
- The Localize.ini file if you checked that option

Just send the shortcut file to your users or point them to it in an email. They can now run your application without ever pointing to the local database directly. If you change directories or file names, simply update the Settings INI file and everyone uses your new specifications when they click on the shortcut again. This makes it easy to support upgrades to new versions of Access and your application.

Deploying both the 32 and 64 bit Versions

By default, both the 32 and 64-bit versions of the launcher are deployed. This lets you change the settings stored in the INI file to support the 64-bit version of Access without having to redeploy the EXE files.

If you are only using Access 2007 or earlier, or do not want to support the 64-bit version of Access 2010 or later, and your users would never have a 64-bit version of Access installed, you can delete the TStart64.exe file since it would never be invoked.

If you are only deploying a 64-bit version, you should still include the 32-bit TStart.exe file. This is necessary if a user has a 32-bit operating system so it properly detects and exits the program.

For information on deploying applications manually, see **Deploying Applications Manually** on page 46.

Chapter 4: Launching Databases

Now that you've used the Total Access Startup Administrator to configure the launch settings and create a shortcut, you're ready to deploy the shortcut to allow database users to launch your application with its new settings. This chapter describes how to use the Total Access Startup Launcher and Redistributable to launch your database.

Topics in this Chapter

- **Total Access Startup Launcher**
- **Total Access Startup Redistributable**
- **Total Access Startup Runtime License**

Total Access Startup Launcher

Now that you have configured the launch options created a shortcut to deploy the database, you're ready to distribute your application. The Launcher has no dependencies and does not require your users to have anything installed on their machine other than a copy of Access. Just send the shortcut file to database users, and the Total Access Startup Launcher program does the rest!

Launching the Database

When the Launch program is used to open a database, Total Access Startup refers to the .INI file for launch options.

First, Total Access Startup checks the deploy method that was selected on the Launch tab of the Administrator Wizard.

Launch Master Database from Network Location

If "Network Deployment" was selected, Total Access Startup launches the master database from the network location using the correct version of Access.

Deploy Master Database to User's Local Machine

If "Local Deployment" was selected, Total Access Startup first checks whether a local copy of the database exists. If a local copy does not exist or the Local Deployment option is set to always replace the local copy, it is created in the location specified in the .INI file, and the database is launched.

If a local copy exists and the option to check its version against the Master database is selected, if the local version matches the master database, the local database is launched. If the master database was updated, the new version replaces the local copy and is launched.



Total Access Startup determines the version by comparing the first record in the Version field. If the value is different, Total Access Startup considers the master database updated. See **Reading Tables in Access ACCDB database** on page 16 for details.

After launching the database, Total Access Startup is removed from memory, so that it does not use any system resources.

Total Access Startup Redistributable

For situations where your users are not on your network and you simply want to ensure they run the correct version of Access with your database, Total Access Startup includes a royalty-free runtime license to distribute the Redistributable programs (TASLnch.exe and TASLnch64.exe) with your applications.

The Total Access Startup Redistributable is a subset of the functionality available in the primary Launcher program, and distribution is subject to the terms of the license agreement that appears in the front of your user manual.

Like the Launcher, the Redistributable has no external dependencies other than the settings INI file that you created using the Administrator and your Access database. The 64 bit Redistributable

(TASLnch64.exe) is required even if your applications only supports the 32-bit version of Access since it's used if any 64-bit version of Access is installed.

Launching the Database with the Total Access Startup Redistributable

When the Redistributable program is used to open a database, Total Access Startup refers to the Settings File for launch options, similar to the Launcher program. The program first attempts to launch the Local Database. If the Local Database does not exist, the Master Database is launched.

Note that the Redistributable program cannot deploy the master database to the user's local machine (which is OK since this user is not connected to your network).

See **Total Access Startup Runtime License** on page 39 more information about distributing Total Access Startup with your applications.

Total Access Startup Runtime License

The Total Access Startup license lets you install it on one network so all the users on your network can run it for an unlimited number of Access applications.

Launching Access for Users Not on Your Network

Total Access Startup can also be used to help disconnected users run your database with the right version of Access. In those situations, there is no network or versions to update. The user simply runs the master database you give them.

Total Access Startup includes a royalty-free runtime license that allows you to distribute the Redistributable programs (TASLnch.exe and TASLnch64.exe) with your applications. These Launcher programs are the only programs that may be distributed. Distribution is subject to the terms of the license agreement that appears in the front of the user manual.

In addition to the Launcher programs, your users need a settings INI file that points to a valid master database—you may need to write the appropriate master database location into the .INI file. The Redistributable Program does not support copying the database to the user's local computer.

Deploying a database using the Redistributable program is similar to deploying a database using the Launcher. Follow the same steps, but replace the Launcher programs (TASStart.exe and TASStart64.exe) with the Redistributable programs (TASLnch.exe and TASLnch64.exe). See **Deploying Applications Manually** on page 46 for details.

Chapter 5: Advanced Topics

This chapter provides information on the format of the INI file that is created by the Total Access Startup Administrator, instructions for deploying applications without using the Administrator program, and information about including the Redistributable program with your applications.

Topics in this Chapter

- **Settings File Format**
- **Deploying Applications Manually**

Settings File Format

When you use the Total Access Startup Administrator to configure an application's launch settings, the information about your database and how to launch it is stored in an INI file. The Administrator program prompts you to specify the location of the INI file on the first page, as explained on page 20.

```
[Database]
Master Database=sample.mdb
Workgroup Database=
Local Database=sample.mdb
Deploy=1
AutoLogin=1
LocalDeployAlways=0
UpdateContinue=0
[Program]
Access Version=16
Access Version Last=9
OneProcessor=0
Processor=0
```

Example of Settings INI file

The following information is stored in the INI file in four sections:

- Database
- Program
- Table
- ErrorInfo

The order or the sections or the items (keys) in each section does not matter.

Section: Database

From the Master Database tab

Master Database

The location of the master database. The master database is what will be copied to the user's local computer when Total Access Startup deploys the application, and it is used for version comparison to determine whether the user has the latest version. If the database has security:

Database Password

The database password (encrypted) for databases that use password security.

Workgroup Database

The location of the workgroup database, if any. This key only applies to databases that use workgroup security.

User and Password

The user name and password (encrypted) for databases that use workgroup security.

AutoLogin

The workgroup login method that was selected.

- 0 for Prompt user for Login
- 1 for Use this Login

From the Launch tab

Deploy

From the Launch tab, the deploy method. See page 20 for details.

- 0 to run the Master Database from its location
- 1 for Local Deployment

Local Database

If deployed to the local machine, the path and name of the database on the user's machine. If the database does not exist, Total Access Startup will create it the first time it is run on the computer. If the database does exist, Total Access Startup will check the version, and launch the database from the location specified.

From the Local Deployment tab

LocalDeployAlways

For Updating the Local Database

- 1 for always replace local copy
- 0 for check for new version

UpdateContinue

From the Local Deployment tab, the check box for "If Existing Database Cannot be Overwritten":

- 0 for Stop. Do not run multiple instances of the same database.
- 1 if Continue. Run the existing database. May be an older version.

Section: Program

from the Access Version tab

Access Version

The primary Access version that Total Access Startup should use when launching the database. The value matches the Access version:

Access Version	INI Value
Access 2	2
Access 95	7
Access 97	8
Access 2000	9
Access 2002	10

Access Version	INI Value
Access 2003	11
Access 2007	12
Access 2010	14
Access 2013	15
Access 2016, 2019, 365	16

Access Version Last

Similar to Access Version, this is the last acceptable Access version to run. If only one version is allowed, it is the same value as Access Version.

Processor

Access processor bitness:

- 0 for both 32 and 64-bit
- 1 for 32-bit only
- 2 for 64-bit only

OneProcessor

1 if Limit to One Processor (Affinity 1) is checked, 0 if not.

from the Launch tab

Macro

The startup macro that is run when the database is launched.

Read Only

1 if “Read-Only” is checked, or 0 if not.

Exclusive

1 if “Exclusive” is checked, or 0 if not.

Command Line

The command line that is run when the database is launched.

From the Local Deployment tab

Batch Install

The file to run when the local database is created on a user’s local machine for the first time.

Batch Install Hide

1 to Hide when the Batch Install file is run, 0 for running it visibly.

Batch Update

The file to execute when the local database is updated with a new version.

Batch Update Hide

1 to Hide when the Batch Update file is run, 0 for running it visibly.

Show Update Message

1 if the Display a message option for updates is checked, 0 if not.

Update Message

The text of the message to display when the local database is updated with a new version.

from the Splash Screen tab

SplashScreen

1 to display a graphic file, 0 to use a dialog.

SplashScreenFile

Name of the graphic file to display as the splash screen.

SplashScreenDeploy

- 1 to copy BMP splash screen files to the user's folder
- 0 if the option is not checked

SplashScreenWait

Number of seconds to pause for the splash screen.

Application Name

The text that shows in the title bar option of the startup dialog, generally the application's title.

Status Text

The message text that appears in the startup dialog. If the text includes multiple lines, the INI file stores return character as “\r\n” because INI file values do not support embedded carriage returns.

Section: Table

This section is from the Local Deployment tab. It is not relevant if the database is run from the network or local updates isn't based on a version table in it.

Name

The name of the table where the version information exists.

Field

The name of the field where the version information exists.

Section: ErrorInfo

from the Exceptions tab

Title

The title bar of the message that shows if Total Access Startup encounters an error (generally the application name).

Contact Info

The text of the message that shows if Total Access Startup encounters an error. If the message text includes multiple lines of text, the INI file stores the return character as “\r\n”. This is because INI file values do not support embedded carriage returns.

Legacy Values

In Total Access Startup 2010 and earlier, there were additional entries to customize error messages:

- Invalid Path Variable
- No ADP Version

These no longer exist in the settings INI file and are now in the localize.ini file with all the other error messages.

Deploying Applications Manually

If you choose not to create the shortcut from the Total Access Startup Administrator (as explained on page 34), you can manually deploy the application.

Deploying Applications Using a Shortcut

Follow these steps to create a shortcut to distribute to your application users:

1. Open Windows Explorer, and browse to the .INI file that you created using the Total Access Startup Administrator program. This file should be in a shared network location where you can point all database users.
2. Copy (not move) the Total Access Startup Launcher programs (TASStart.exe and TASStart64.exe) from the Total Access Startup installation folder to the shared network location. TASStart.exe detects if a 64-bit version of Access is installed, and automatically redirects to the 64 bit EXE if it finds one – even if it’s going to launch the 32-bit version.
3. If you have localized the error messages, copy the Localize.INI file.
4. From the Windows Explorer menu, choose File, New, Shortcut.
5. When prompted for the location of the item, browse to the location of the Standard Launcher program (TASStart.exe) that you created in the shared network location. Press OK to close the Browse dialog, but do NOT press the Next button yet.
6. At the end of the path in the Location field, append the name of the .INI file containing the database settings. Include the full path of the INI file if it’s not in the same folder as the TASStart.exe file. The Location field should now contain text similar to this (of course, your path information will be different from what is shown below):

```
"\\NetworkDrive\Shared\Accounting\TASStart.exe" "AppSettings.INI"
```
7. Press Next, and give the shortcut an appropriate name. Change the icon if you want. Press [Finish] to create the shortcut.
8. Test the shortcut to ensure that it launches the database correctly.
9. Point your users to the shortcut. They should always open it by using this shortcut.

Deploying Applications Without a Shortcut

When you run the Launcher without specifying an INI file, it looks for an INI file with its same name in its folder. This lets you launch the Total Access Startup Launcher without having to create a shortcut:

1. Copy Total Access Startup Launcher programs (TASStart.exe and TASStart64.exe) to a shared network location.
2. Copy the INI file that contains the appropriate application settings to the same folder and rename it TASStart.INI.

Alternatively, you can rename the TASStart.exe file to match your INI file. For instance, if your INI file is named “AcctApp.INI”, rename TASStart.EXE to “AcctApp.exe”. Also rename TASStart64.EXE to “AcctApp64.exe”.

Chapter 6: Troubleshooting and Support

This chapter provides information on troubleshooting problems that arise and obtaining support for Total Access Startup.

Topics in this Chapter

- **Troubleshooting the Errors Users May Encounter**
- **Support Resources**
- **Web Site Support**
- **Technical Support Options**
- **Contacting Technical Support**

Troubleshooting the Errors Users May Encounter

These are the errors users may encounter when running the Total Access Startup from the launcher. They are listed in the Localize.ini file that you can modify and translate to another language.

Cannot find INI settings file

The INI file specified in the shortcut does not exist or an INI file named the same as the launcher (by default TStart.INI) cannot be found. Update your shortcut to point to the right file. Make sure it is not pointing to a file on your local hard disk or location your users cannot see.

DAO could not be loaded to open Access databases

The launcher is unable to load the Microsoft Access Data Access Object (DAO). This is used to open Access MDB databases. It is part of Microsoft Access and most recent versions of Windows. If your users encounter this, they probably do not have Access installed properly on their PC.

Master database does not exist

The master database file in your settings INI file cannot be found. This can occur if the database does not exist or exists in a location your users cannot see. If you used a mapped drive (e.g. K:, Z:, etc.), your user may not have the same mapping as your machine, so they can't find the database. It is better to use UNC network folder locations rather than mapped drives.

Workgroup database file does not exist

If your database has workgroup security, the workgroup database file cannot be found. Similar to the missing Master Database, make sure the path is visible to your users.

Specified Microsoft Access version is not installed

This message appears if the specified Access version or range of Access versions including processor bitness cannot be found. The user's PC needs to install the retail or runtime version of Access that your database requires.

Cannot find the file to run before first installation

The file to run when the local copy is first created cannot be found. Make sure the file is visible to your users. Using a UNC path rather than a mapped drive is recommended.

Cannot find the file to run before installing an update

The file to run when the local copy is updated cannot be found. Make sure the file is visible to your users. Using a UNC path rather than a mapped drive is recommended.

Cannot Start batch file

The file to run (first installation or update) was found but could not run successfully. Check to make sure the file is valid and can be run from the user's machine.

Invalid local database name

The name you have specified for the local copy of the database cannot be created. This could be due to invalid characters in the name. Check the name to verify it is acceptable.

Invalid path variable was specified

The only path variables allowed are %Desktop%, %My Documents%, and %Profile%. This error appears if something else is specified.

Local folder cannot be created

The master database was found and the folder of the local database name you have specified does not exist. The attempt to create the database failed. This may be due to User Access Control (UAC) permissions that prevent your user from creating folders on their machine. It should not be a problem if you are using a user folder like %My Documents% or %Profile%.

Local database file cannot be created

The master database was found and the folder where you have specified it should be copied exists or was just created. However, it could not be copied to the user's PC. This can occur if the master database is locked to prevent copying it (maybe it is opened in Access) or something prevents it from successfully being copied to the user's folder.

Local database cannot be overwritten

This can occur if the user has the existing database locked (it is already open in Access) and the option on the Local Deployment tab to continue if it cannot be overwritten is not checked.

Local database could not be opened

This occurs for MDB databases when it is not possible to compare the existing local copy of the database with the master copy. It can occur if the local copy is locked exclusively by the user.

Master database could not be opened

This occurs for MDB databases when it is not possible to compare the existing local copy of the database with the master copy. It can occur if the master database copy is locked exclusively by a user.

Local database could not be opened to check its version.

This occurs for ACCDB databases when it is not possible to compare the existing local copy of the database with the master copy. It occurs because the user does not have the Microsoft Access Database Engine installed. Visit [Access Database Engine to Support ACCDB Databases](#) on page 13 for more information

Master database could not be opened to check its version.

A similar message may occur if there is a need to check the master database.

File property TASVersion has not been set

For Access Data Projects (ADPs), a file property needs to be set to update the local copy. Check your master database to ensure this is set. See **Preparing Access Data Projects (ADPs)** on page 17 for more information.

Version information could not be retrieved

The version table in your ACCDB/MDB master database could not be found. Check the settings to make sure the correct table and field name are selected. See **Preparing MDB/ACCDB Databases** on page 17 for more information.

Support Resources

There are many resources available to help you resolve issues you may encounter. Please check the following:

Readme File

Check the README file for the latest product information. The README file is located in the directory where you installed the product.

Product Documentation

We've spent a great deal of care and time to make sure the Total Access Startup manual and help file are very detailed. Check the Table of Contents and Index for your question, and read the appropriate pages.

Web Site Support

The FMS web site contains extensive resources to help you use our products better. Resources include product updates, frequently asked questions (FAQs), forums, information on new versions, betas, and other resources.

Home Page

The FMS home page is located at:

<https://fmsinc.com>

News and important announcements are posted here.

Support Site

The main support page is located at:

<https://support.fmsinc.com>

From this page, you can quickly locate the other support resources.

Product Updates

FMS takes product quality very seriously. When bugs are reported and we can fix them, we make the updates available on our web site. If you are encountering problems with our product, make sure you are using the latest version.

Frequently Asked Questions (FAQs)

Common questions and additional information beyond what is in the manual is often available from our FAQs.

Microsoft Patches

Our support site also includes links to Microsoft patches that are related to our products. Make sure you're using the latest versions by checking here or visiting the Microsoft site.

Technical Support Options

FMS is committed to providing professional support for all of our products. We offer free access to our online FAQs and forums. Bug reports, feature requests, suggestions, and general pre-sales questions related to our products are always available at no cost.

Additional maintenance plans are available to provide subscribers with enhanced technical support. This is the best way for you to stay current with the rapidly changing technologies that impact project development, and to ensure you are getting the maximum return from your software investment. Please visit our web site, fmsinc.com, for the most up-to-date information.

Features & Benefits	Premium	Incident	Standard
Access to FAQs	✓	✓	✓
Access to Forums	✓	✓	✓
Minor Upgrades/ Bug Fixes	✓	✓	✓
Telephone Support	✓	Per incident	First 30 Days
Email Support	✓	Per incident	First 30 Days
Priority Response Time ¹	✓	✓	
Senior Engineer Support Team	✓	✓	
Email Project for Testing	✓	✓	
Programmatic Code Assistance ²	✓	✓	
Major Upgrades for Current Version (not between Access versions)	✓	Additional fee	Additional fee
Cost	Annual Fee	Fee Per Incident	Included

1. Response generally within two business days. Actual resolution may take longer depending on complexity of the issue reported.
2. Custom Programming implementation is not provided in our Support Maintenance plans. For products that include a programmatic interface, we can provide instructions for using our programmatic interface, and show examples, but we do not implement this into your projects. This service is available from our Professional Solutions Group.

Premium Subscription

The Premium Subscription is the ideal option for customers seeking the highest level of support from FMS. The annual fee entitles you to telephone and email technical support from a senior support engineer.

From time to time, FMS may release new versions of existing products which add new features. These are point releases (e.g. from version 15.0 to 15.1) and are different from new builds that correct problems in existing features (e.g. from version 16.00.0001 to 16.00.0004).

These point releases are available for a nominal upgrade fee to existing customers. Premium Technical Support subscribers receive these upgrades automatically and for no additional charge during their subscription term.

NOTE: Upgrades between versions (for instance going from Access 2013 to Access 2016) are not considered Point Release Upgrades and are not included in the Premium Subscription.

Subscriptions are available for a twelve month period, and may be purchased at any time. You must be the registered owner of the product to purchase a subscription and the only person contacting FMS for support under the subscription.

Please ensure you have purchased the Subscription you need for Total Access Startup.

Per Incident

Our Per Incident package is available individually or by purchasing multiple incidents in advance. The Per Incident support package provides telephone and email technical support from a Senior Technical Support Engineer for resolving one incident.

An incident is defined as a single question related to one of our products. The Per Incident period is from start to finish (report of the incident to resolution) for a single incident. If you anticipate multiple questions for a single product, we recommend purchasing the Premium Subscription.

Standard Subscription

Our Standard Subscription comes with every product purchased for no additional cost. The standard subscription comes with access to our FAQs and forums, and responses to bug reports and feature requests for that version.

Please note that the person requesting support must also be the registered user of the product. Registration is required and will be requested by our Technical Support professionals.

Contacting Technical Support

If the troubleshooting suggestions and other support resources fail to resolve your problem, please contact our technical support department. We are very interested in making sure you are satisfied with our product.

Registering Your Software

Please register your copy of Total Access Startup at:

<https://fmsinc.com/register>

You must be registered to receive technical support. Registration also entitles you to free product updates, notifications, information about upcoming products, and beta invitations. You can even receive free email notification of our latest news.

Contact Us

The best way to contact us is to submit a ticket on our support site:

<https://support.fmsinc.com>

Please provide detailed information about the problem that you are encountering. This should include the name and version of the product, your operating system, and the specific problem. If the product generated an error file, please submit that as well.

Our ticketing system will let you track the progress of your issue and see the entire thread of communications and file attachments.

Please bear in mind that a unique issue may involve meetings between the technical support staff and product developers, so your patience is appreciated.

Microsoft Technical Support

FMS only provides technical support for its products. If you have questions regarding Microsoft products, please contact Microsoft technical support.

Index

%

%Desktop%, 27, see path variables
%My Documents%. see path variables
variables
%MyDocuments%, 27
%Profile%, 27, see path variables

A

accdb, 49
ACCDBs, 17
version, 17
Access 2010 32 bit version, 9
Access 2013, 9
Access 2016, 9
Access version, 10, 43
Access version last, 44
Access version missing, 48
Access version tab, 23
additional Access versions, 24
Administrator, 18–36
Access Version tab, 23
exception tab, 33
File tab, 20
INI file, 20
Launch tab, 25
Local Deployment tab, 28
Master Database, 21
Master Database tab, 21
splash screen tab, 30
ADPs, 9, 17–18
TASVersion, 17
version, 17
application name, 45
AutoLogin, 43

B

batch file, 28, 29, 44

C

Citrix, 27
command line, 27, 44
contact info, 45
contact information, 33
create shortcut, 34
custom properties, 17

D

DAO, 48
database
backing up, 7
launching, 38, 39
master, 21
open exclusive, 27
open read-only, 27
password, 22, 42
preparing. see preparing database
version, 17, 29, 43
database security, 21
demos, 10
deploy master to local machine, 16
deploy method
deploy master to local machine, 16
launch master from network, 16
deployment, 26, 28
Desktop. see path variables
Display message to users. see update message
distribution, 38, 39

E

error information, 10, 45
contact information, 33
exception tab, 33
exclusive, 27, 44

F

field version, 29

G

graphic file, 30

H

hide, 8, 28

I

icon file, 35
INI file, 20, 42, 48
installation, 12

L

language localization, 35
last Access version, 44
launch master from network, 16
launch tab, 25
Launcher, 37–38
license agreement, i–iii
local database, 43, 49
path variables. see path variables
local deployment, 26
local deployment tab, 28
local folder, 49
localization file, 35
localize.ini file, 35, 45, 46

M

macro, 27, 44
master database, 16, 21, 42, 48
MDBs, 17
version, 17

message text, 32
Microsoft Office Access 2007, 9
most recently used, 7, 20
MRU, 7, 20
multi user setup, 27
My Documents. see path variables

N

network deployment, 26
network path, 21
new features, 7

O

obfuscate, 8, 20
one processor, 9
Open File button, 20

P

password, 22, 42
path variables, 9, 27, 49
 Desktop, 9, 27
 My Documents, 9, 27
 Profile, 9, 27
pause, 32
preparing database, 16–18
 ACCDBs, 17
 ADPs, 17–18
 MDBs, 17
primary Access version, 43
processor version, 44
Profile. see path variables
prompt for login, 22

R

read-only, 27, 44
Redistributable, 38, 39
registration, 10, 53
relative path, 8
RemoteApp, 27

run file, 28, 29
run hidden, 8, 28
runtime license, 38, 39

S

Save As button, 20
security, 21, 42, 43
 AutoLogin, 43
 password, 22, 42
 workgroup, 22, 42
settings file, 20, 42
setup, 12
shortcut, 34
shortcut name, 35
show update message, 44
splash screen, 9, 32
splash screen tab, 30
SplashScreen, 44
SplashScreenDeploy, 45
SplashScreenFile, 45
SplashScreenWait, 45
split database architecture, 25
startup
 macro, 27
 message, 32
 screen, 32
 title bar, 32
startup screen, 30
startup text, 45
subfolders, 25
system requirements, 12

T

TASLnch.exe, 38, 39
TASLnch64.exe, 39
TASStart.exe, 46
TASStart64.exe, 46
TASVersion property, 17, 50
technical papers, 10
technical support, 48–53
 contacting, 53
 options, 51

 web site, 50
Terminal Server, 27
title, 45
title bar, 32
Total Access Startup Administrator.
 see Administrator
Total Access Startup Launcher. see
 Launcher
Total Access Startup Redistributable.
 see Redistributable
Total Visual Agent, 7
troubleshooting, 48
trusted location, 8, 25

U

UNC path, 21, 48
uninstalling, 14
update file, 29
update message, 10, 30, 44
updates, 10, 13
use this login, 22

V

version
 ACCDBs, 17
 Access, 23
 ADPs, 17
 database, 17
 MDBs, 17
version field, 17, 29
version table, 17, 29, 50

W

web site, 10
Windows RemoteApp, 27
wizard. see Administrator
workgroup database, 48
workgroup security, 22, 42